

2024 PAPA Regional Technical Meeting

2023 PennDOT LTS Review

2023 Summary of Lot Payments (LTS and HOLA Lots)

Categories:

- Wearing & Binder Courses (Old 409, New 413)
 - Standard (409A, 409APWL, 413STDPWL)
 - RPS (409B, 409BPWL, 413RPSPWL)
- Base Course
 - Standard (409A, 409APWL, 413STDPWL)
- SMA (419)

2023 Summary of Lot Payments (LTS and HOLA Lots)

Includes:

Laboratory Testing Section (LTS) Data

- Includes Partial Lot Payments (n=1 or n=2)
- Does not include lots that have District Special Provisions (DSP)

Asphalt Local Acceptance (ALA) Data

- Entered in eCAMMS and includes lot payment
- Includes Partial Lot Payments (n=1 or n=2)
- Does not include lots that have District Special Provisions (DSP)

2023 LTS SAMPLES OVERVIEW

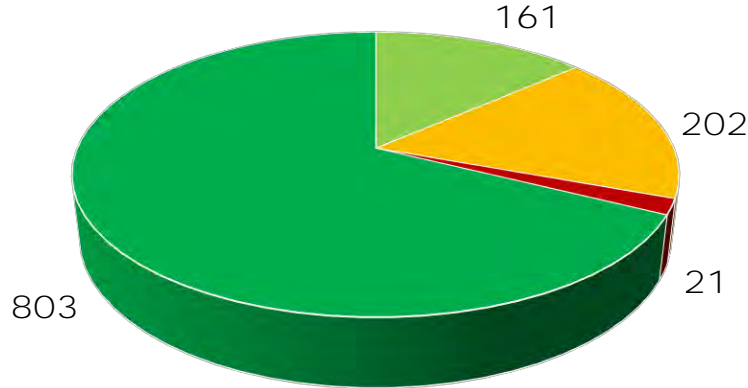
NUMBER OF INCREMENTS PROCESSED BY LTS

	ACCEPTANCE	OTHER	TOTAL
IGNITION AND SOLVENT SAMPLES	5131	833	5964
DENSITY SAMPLES	4558	270	4828
LONGITUDINAL JOINT SAMPLES	1454		1454
GMM SAMPLES		844	844
		TOTAL	13090

2023 Statewide Lot Payment Wearing and Binder Courses

Lot Payment Wearing & Binder

- Full Payment
- Reduced Payment
- Remove & Replace/50% Pay
- Bonus Pay



Total = 1187 Samples

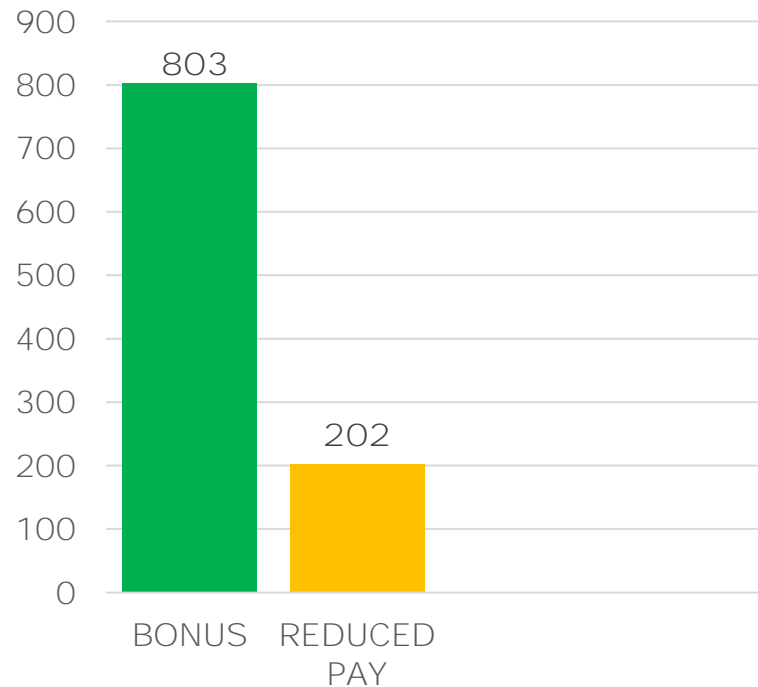
Bonus Payment	67.6%
Full Payment	13.6%
Reduced Payment	17.0%
Defective - R&R/50%	1.8%

Lots	Total	AC	No.200	Density
Defective	21	4	4	14

Bonus vs. Reduced Pay Wearing and Binder Courses

Pay Factor	Number of Samples	TOTAL
74%	1	202
82%	1	
83%	2	
85%	1	
86%	3	
87%	2	
88%	6	
89%	5	
90%	7	
91%	7	
92%	11	
93%	12	
94%	21	
95%	13	
96%	16	
97%	21	
98%	32	
99%	41	
100%	161	803
101%	64	
102%	173	
103%	107	
104%	459	

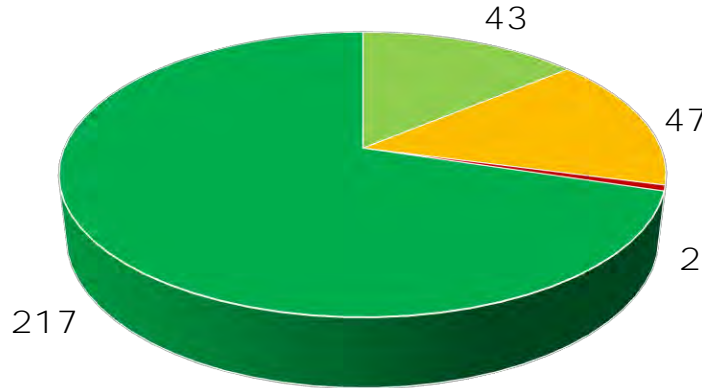
Number of Samples



2023 Statewide Lot Payment Base Courses

Lot Payment Base Course

- Full Payment
- Reduced Payment
- Remove & Replace/50% Pay
- Bonus Pay



Total = 309 Samples

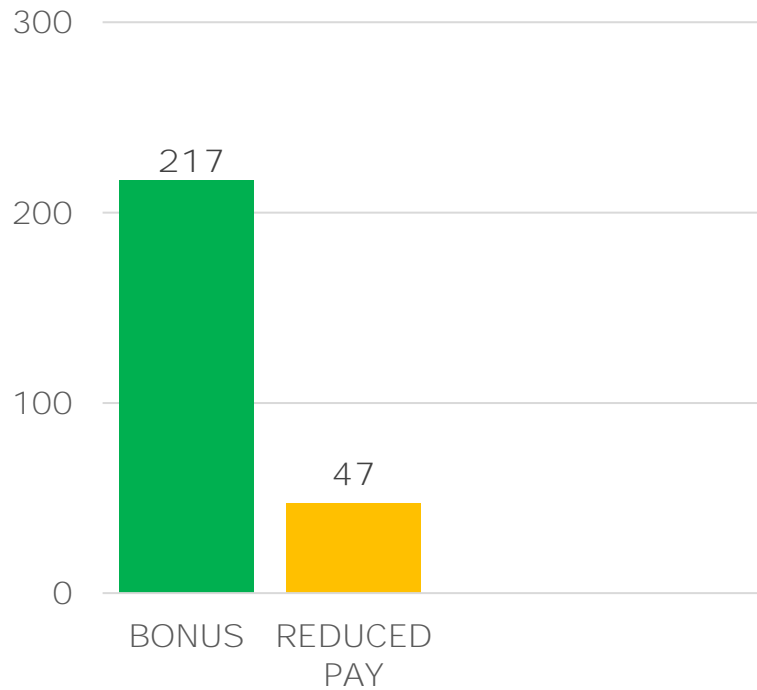
Bonus Payment	70.2%
Full Payment	13.9%
Reduced Payment	15.2%
Defective - R&R/50%	0.6%

Lots	Total	AC	No.200	Density
Defective	2	1	1	0

Bonus vs. Reduced Pay Standard Base Course

Pay Factor	Number of Samples	TOTAL
86%	1	47
87%	1	
88%	1	
90%	1	
91%	3	
92%	1	
93%	1	
94%	6	
95%	3	
96%	4	
97%	6	
98%	11	
99%	8	
100%	43	217
101%	13	
102%	37	
103%	20	
104%	147	

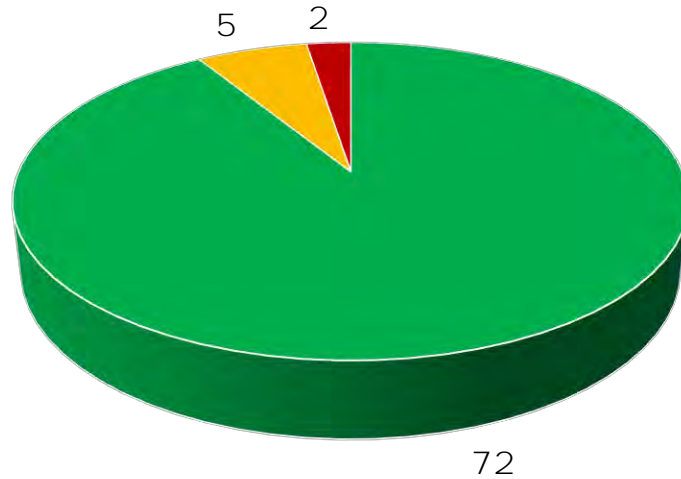
Number of Samples



2023 Statewide Lot Payment SMA Wearing Courses

SMA Wearing Course

■ Full Payment ■ Reduced Payment ■ Remove & Replace/50% Pay



Total = 79 Samples

Full Payment	91.1%
Reduced Payment	6.3%
Defective – R&R/50%	2.5%

Lots	Total	AC	No.200	Density
Defective	2	1	0	1

2023 LTS LONGITUDINAL JOINT SAMPLES

LONGITUDINAL JOINT SAMPLES	
NUMBER OF INCREMENTS	1454
NUMBER OF AVERAGES	253
INCENTIVE	DISINCENTIVE
\$ 1,236,800	\$ 141,950

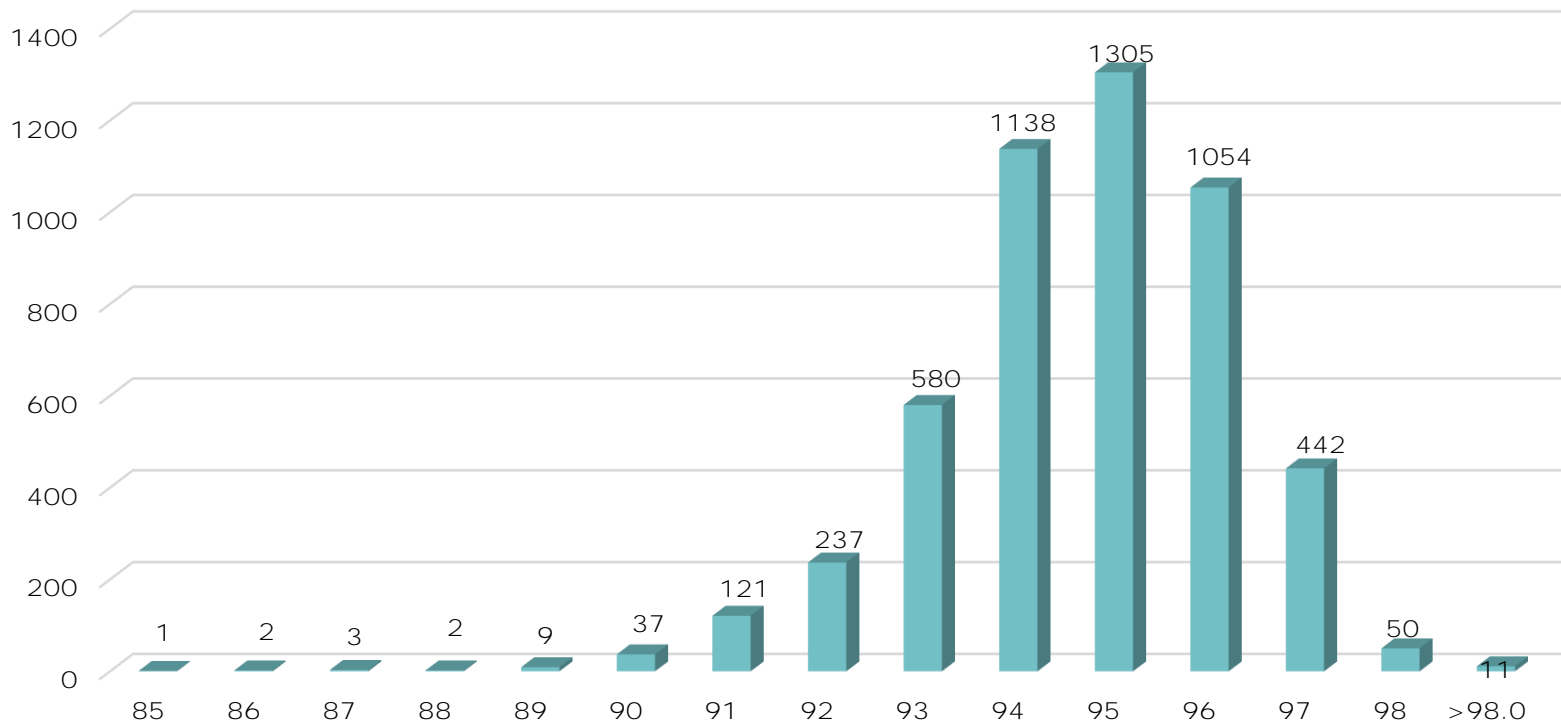
2023 LTS RETEST OVERVIEW

21 LOTS RETESTED

6 LOTS	FULL PAY OR BONUS PAY	29%
8 LOTS	RESULT DID NOT CHANGE OR GOT WORSE	38%
7 LOTS	IMPROVED – REDUCED PAY	33%

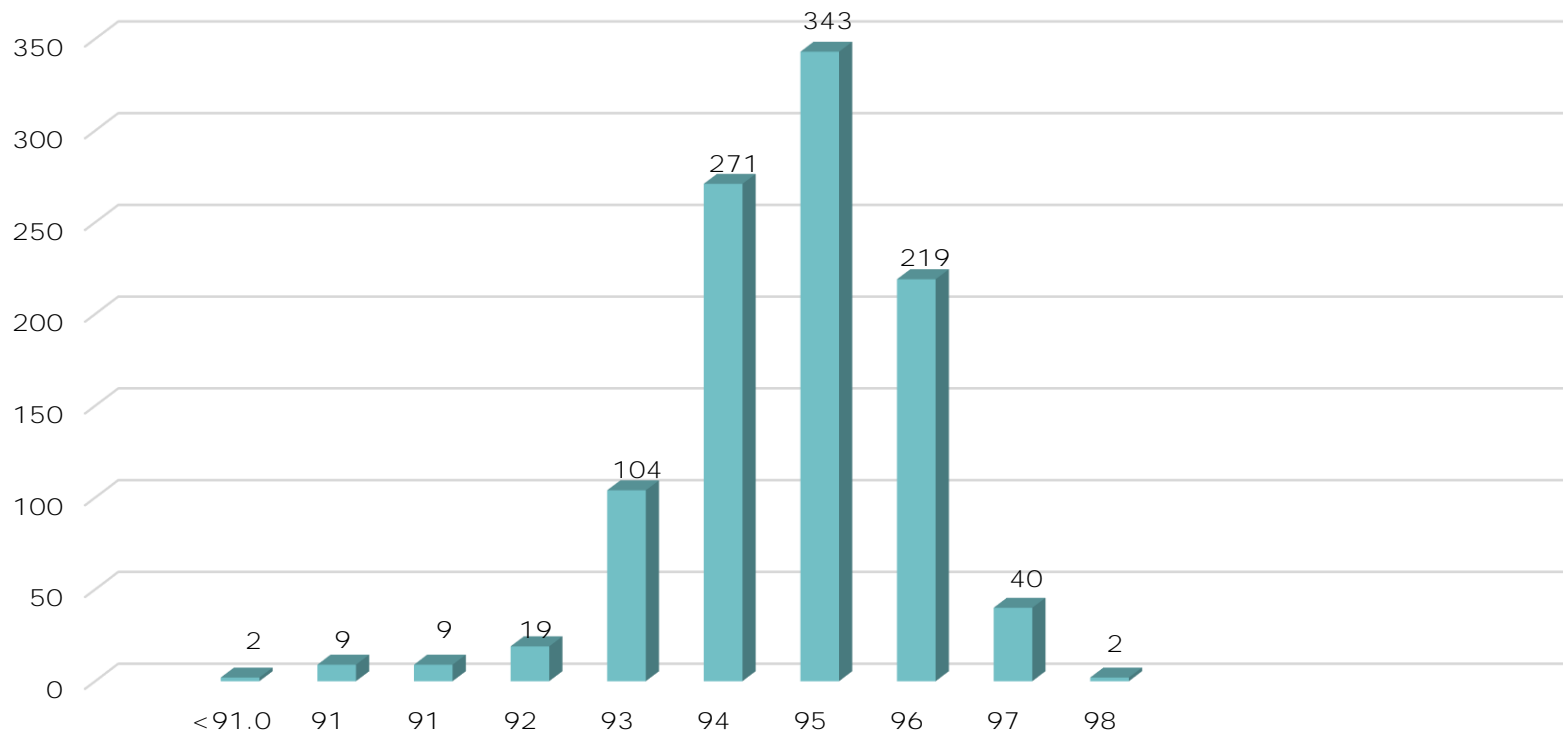
2023 Statewide Density Distribution Wearing and Binder Courses – Increments

Total = 4992

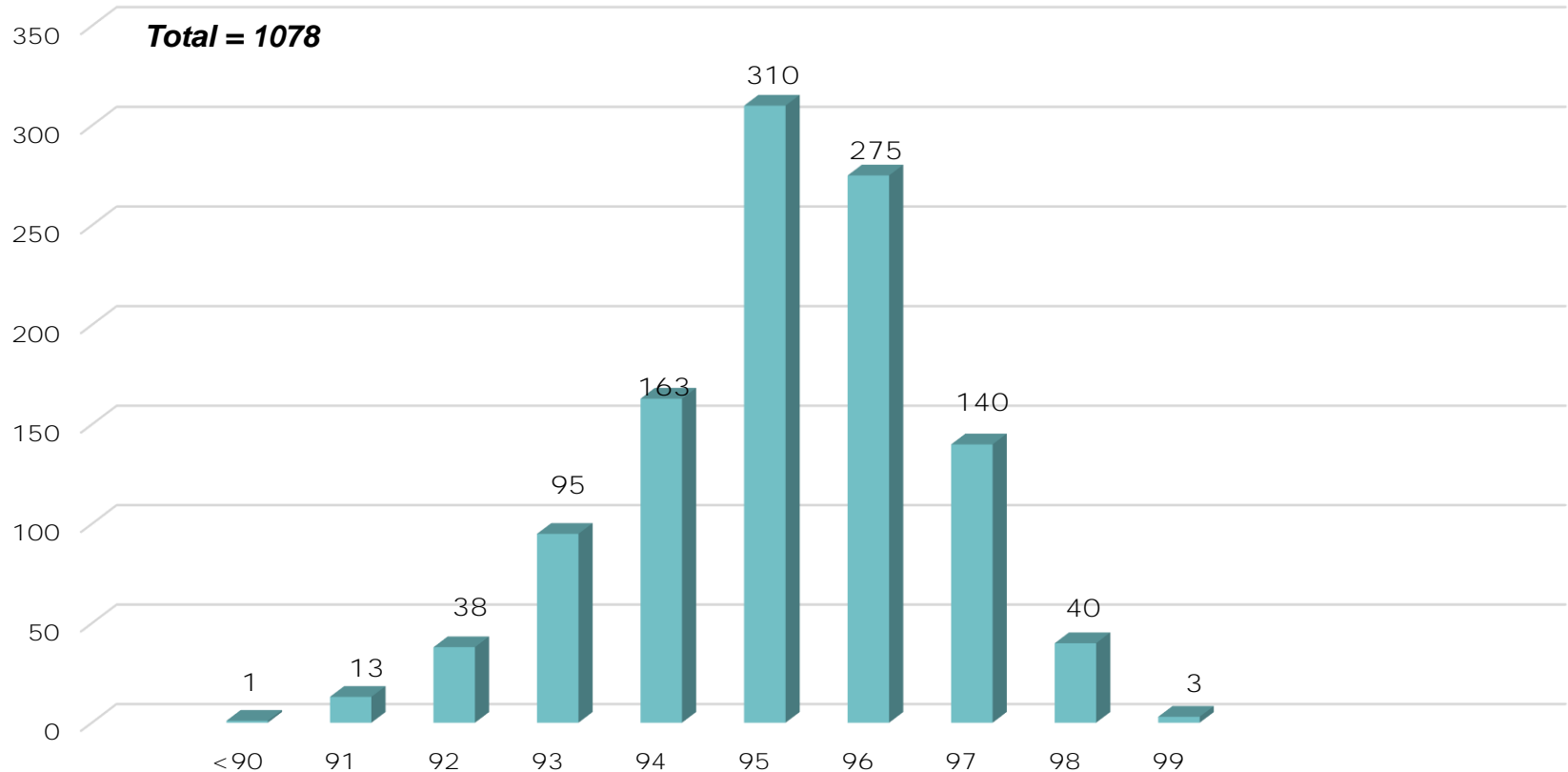


2023 Statewide Density Distribution Wearing and Binder Courses – Averages

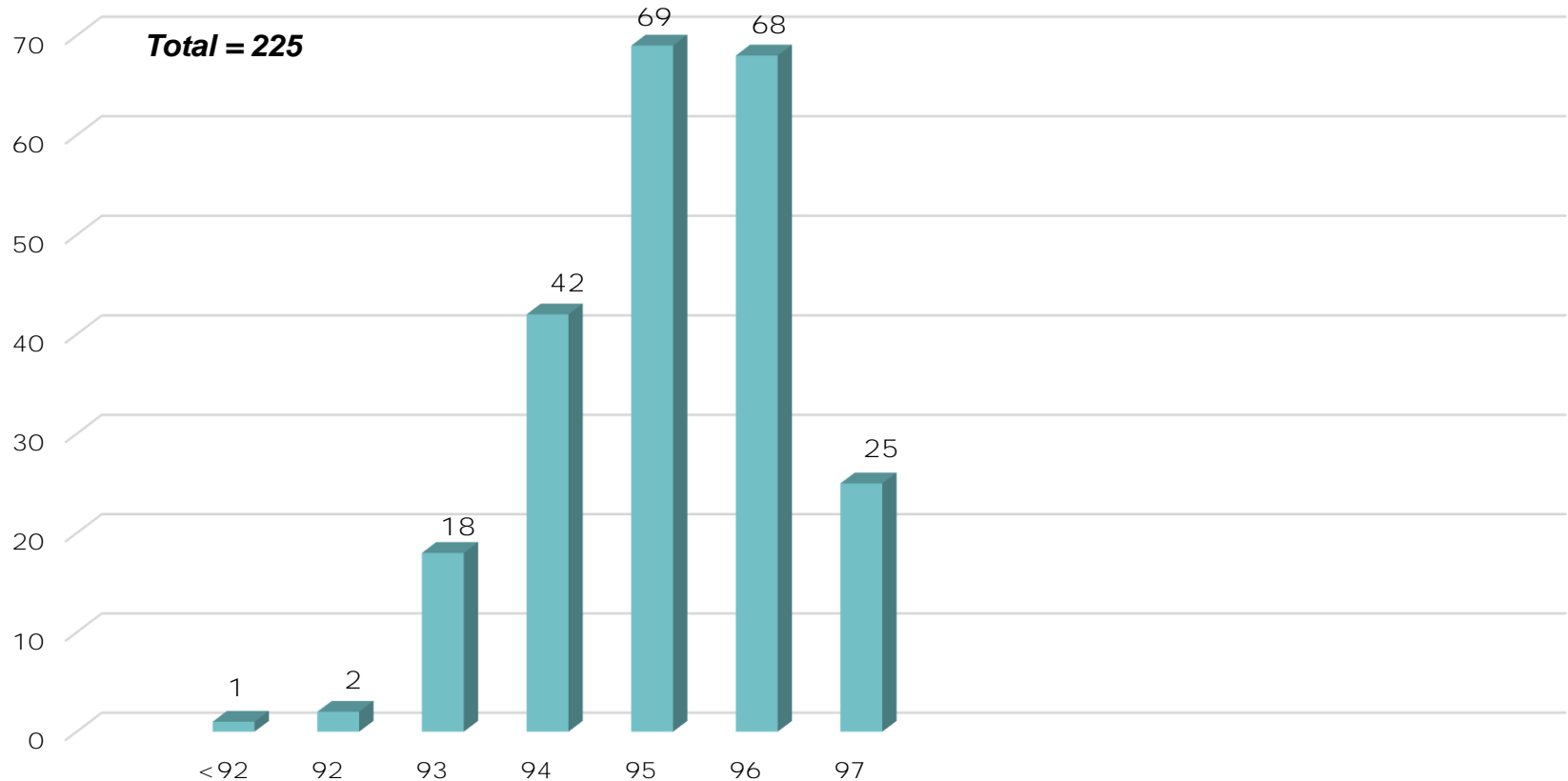
Total = 1018



2023 Statewide Density Distribution Base Courses – Increments



2023 Statewide Density Distribution Base Courses – Lot Averages



QUESTIONS?

Jay Sengoz

csengoz@pa.gov