



**Pennsylvania Asphalt  
Pavement Association**  
Pennsylvania Rides on US.



**JANUARY 17, 2023**  
**LARRY SHIFFLET**  
**DEPUTY SECRETARY FOR PLANNING**

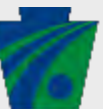
# PENNDOT BY THE NUMBERS



\*Total miles on all PA roadways

# FOCUS AREAS: ABOUT PEOPLE

- Safety
- Relationships
- Program Delivery
  - Asset Management
  - Pavement Updates
  - Innovation
  - Program
- Funding
- Cash Flow
- 2023 Program Outlook



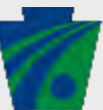
# SAFETY:

- WORKFORCE
- WORK ZONES
- FAMILIES
- PUBLIC

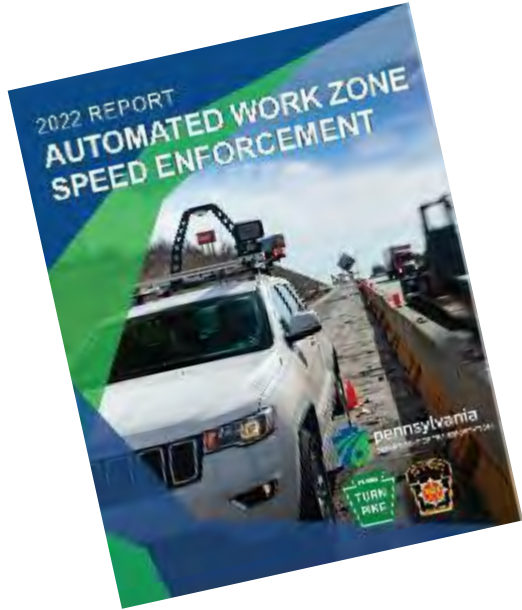
# INDUSTRY-WIDE SAFETY STAND-DOWN



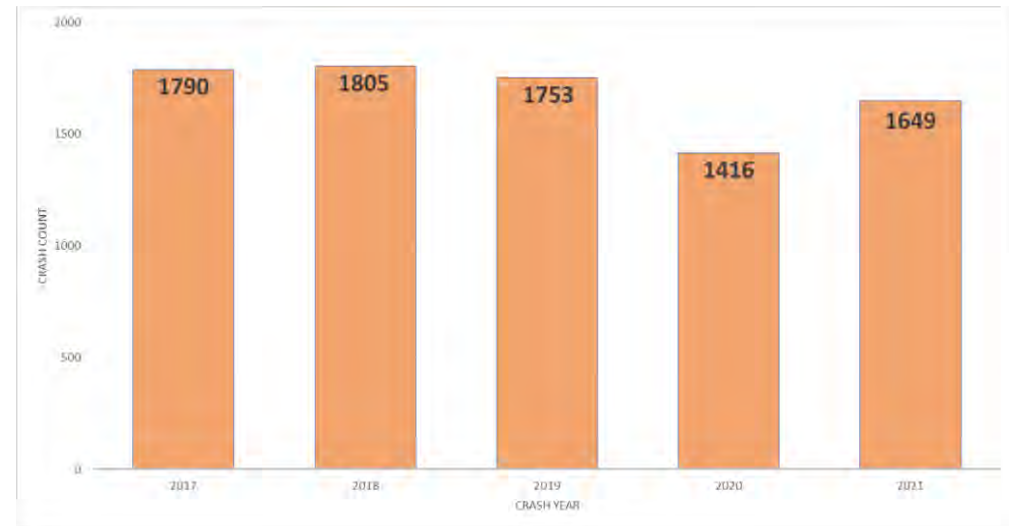
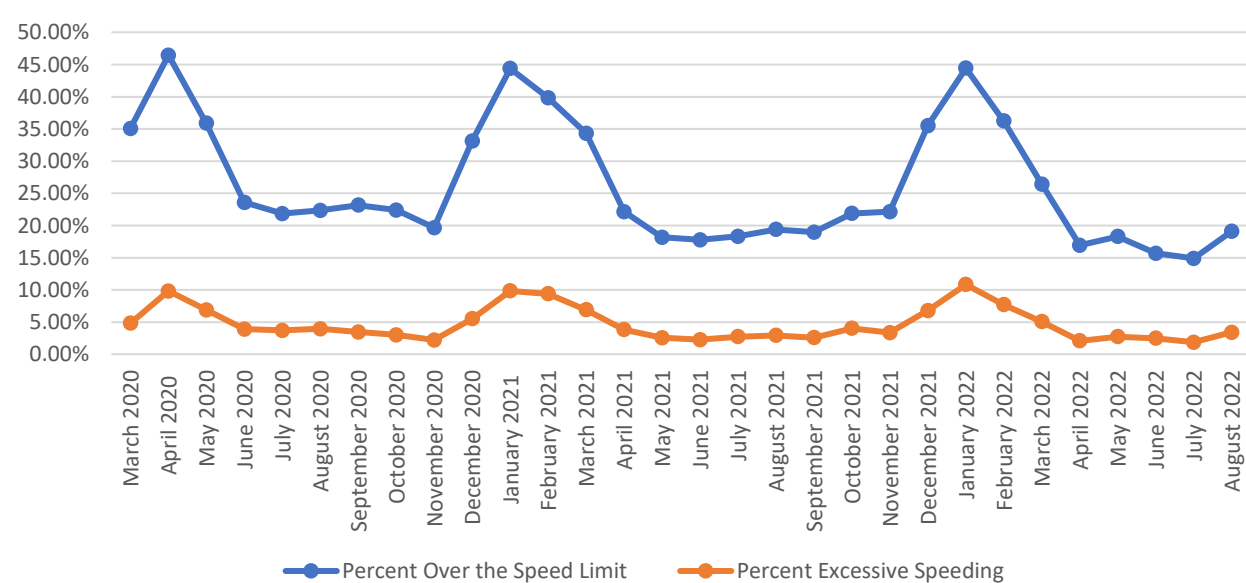
#StandDown2SaveLives



# AUTOMATED WORK ZONE SPEED ENFORCEMENT



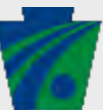
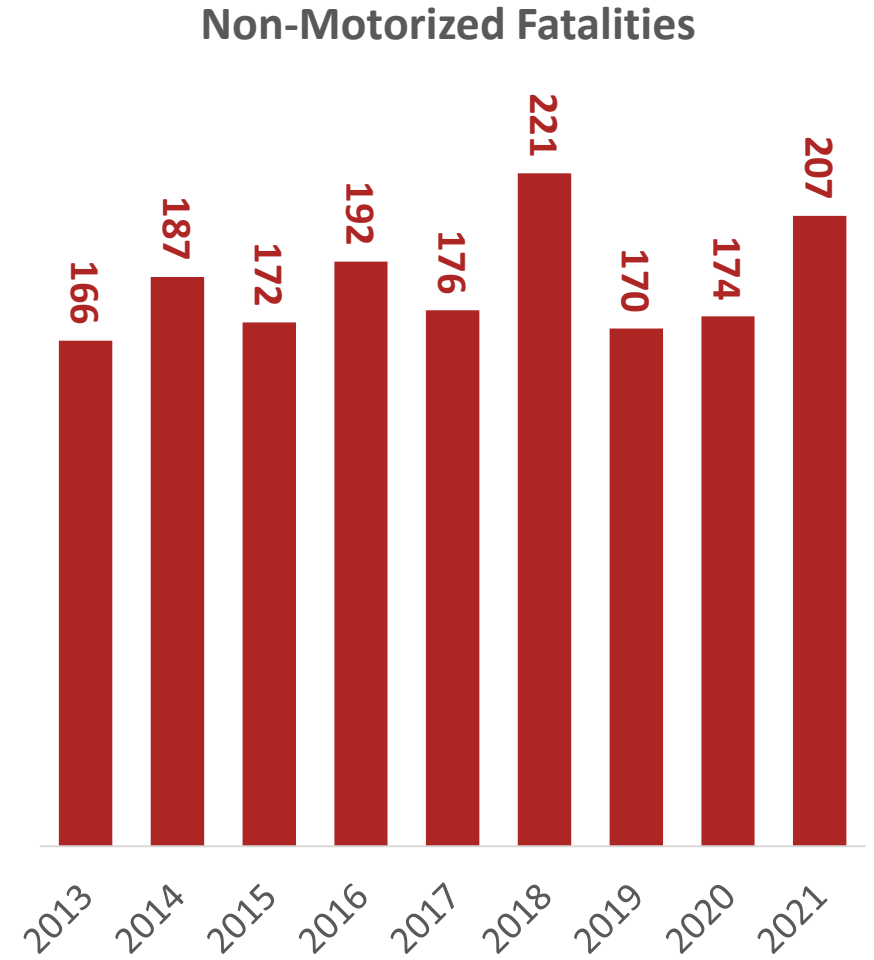
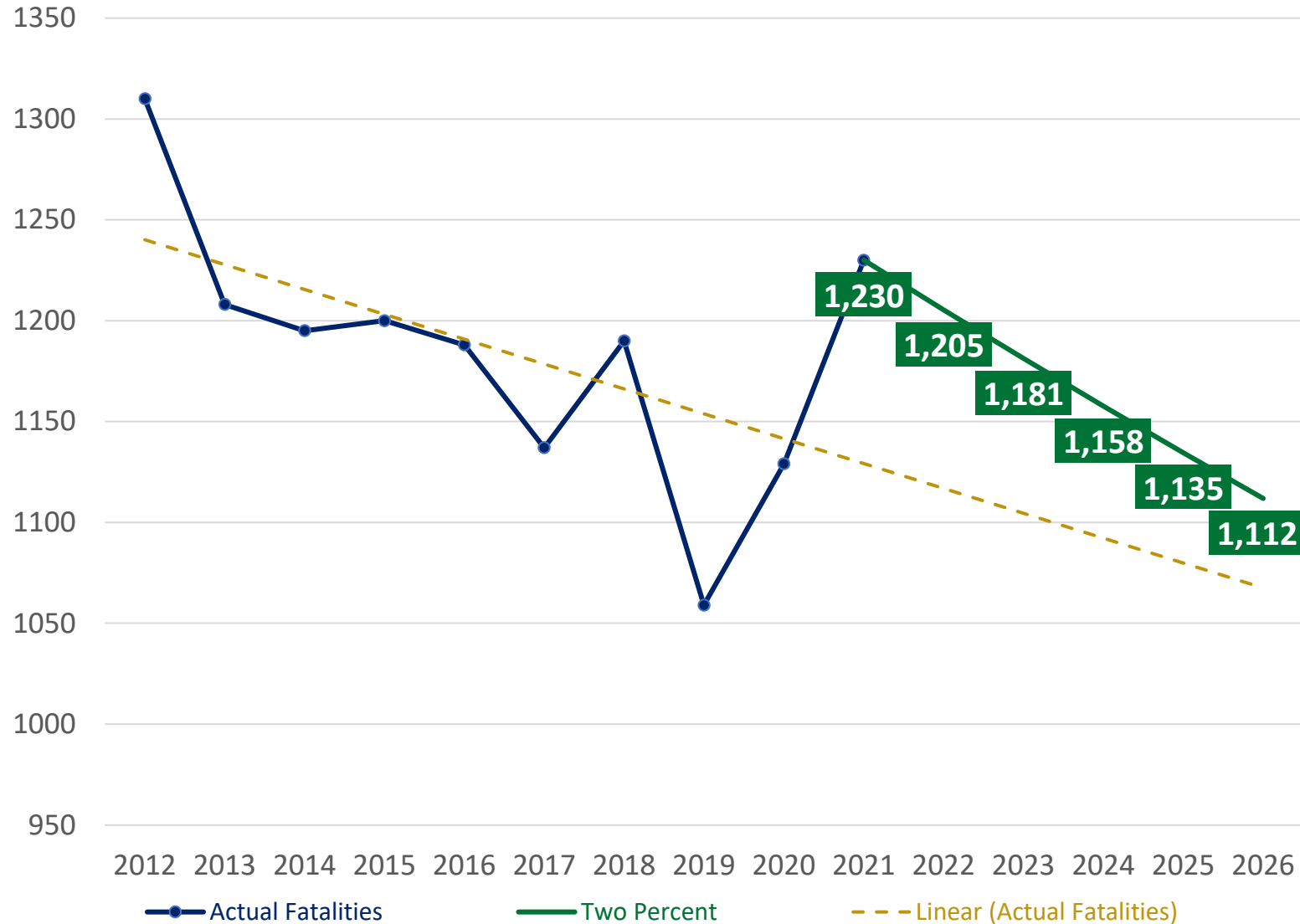
- Annual report published April 2022
- Covers from start of program to end of 2021
- Program is fulfilling its stated goals
- Program is focused on **SAFETY**, not revenue
  - Operated at a loss through end of 2021
- 68% of deployments have been to short-term patterns



All Work Zone Crashes 2017-2021



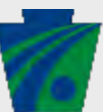
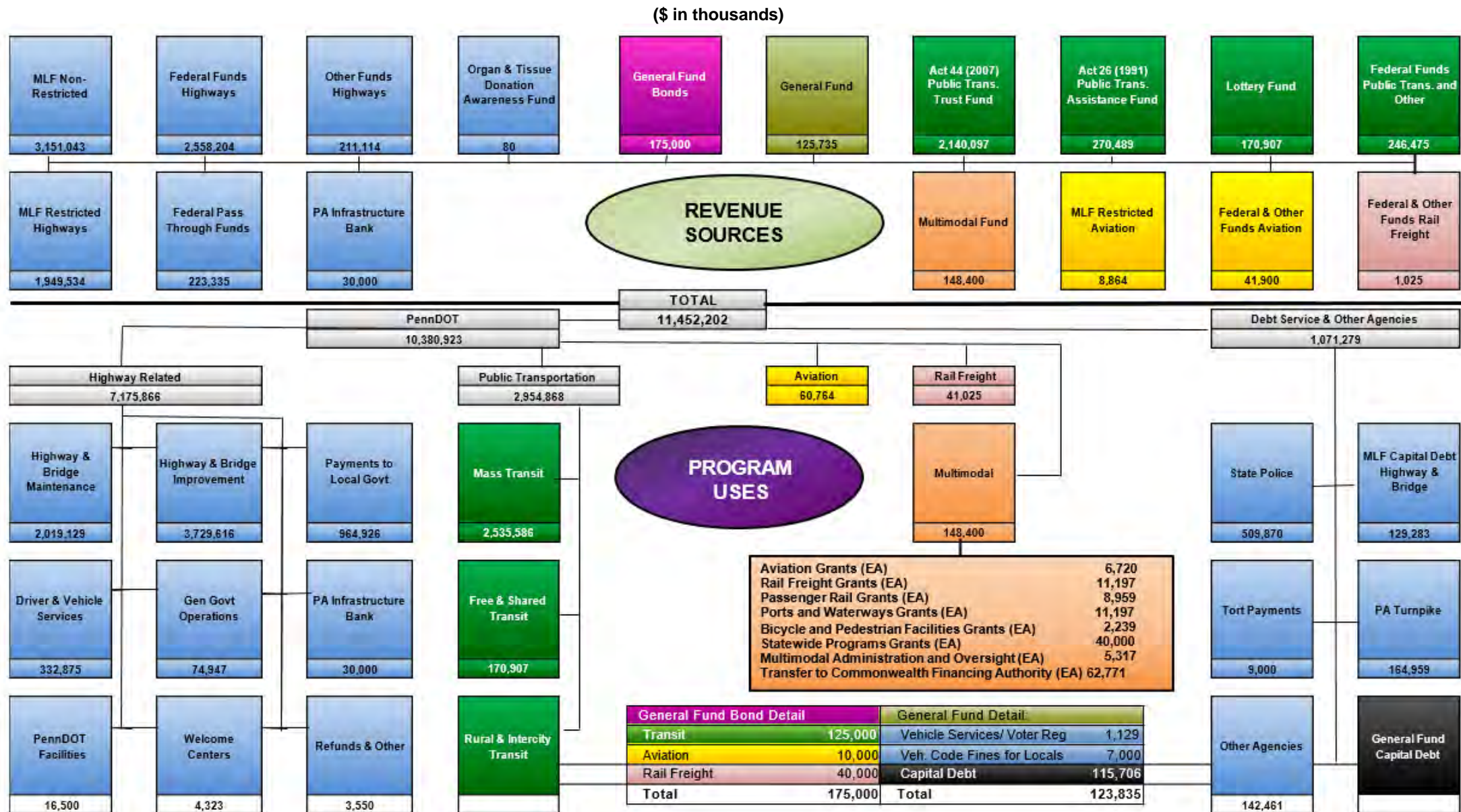
# FATALITIES



# FUNDING



# DEPARTMENT OF TRANSPORTATION - ENACTED BUDGET SOURCES & USES OF FUNDS TO SUPPORT 22-23 PROGRAMS



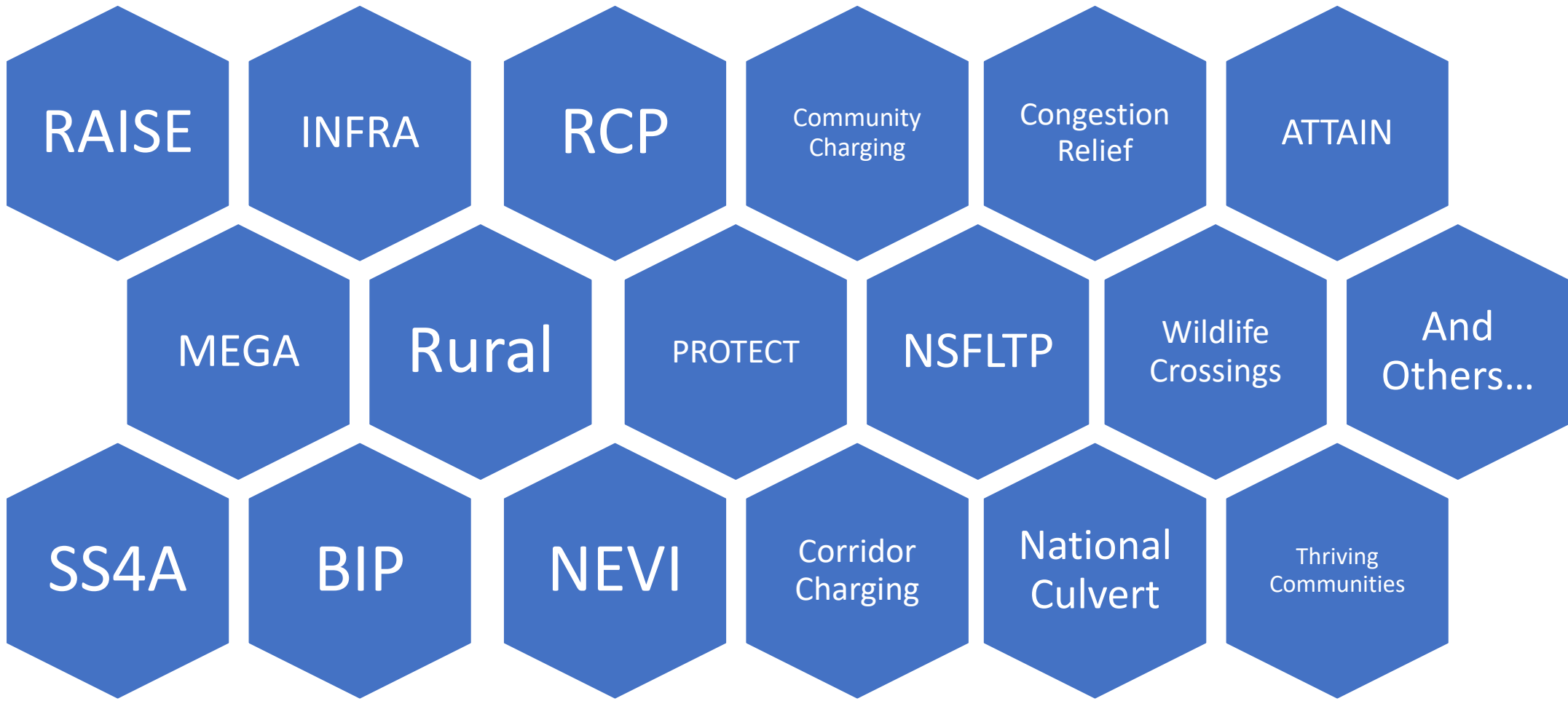
# BI-PARTISAN INFRASTRUCTURE LAW (BIL)

FFY	PA Increased Formula Highway and Bridge Funding	PA Federal Formula Highway and Bridge Funding Totals (Existing + New)
2022	\$704.7 million	\$2.5 billion
2023	\$748.2 million	\$2.5 billion
2024	\$792.5 million	\$2.6 billion
2025	\$837.7 million	\$2.6 billion
2026	\$883.9 million	\$ 2.7 billion
<b>5-year Total</b>	<b>\$4 billion</b>	<b>~\$13 billion</b>



# BI-PARTISAN INFRASTRUCTURE LAW (BIL)

Numerous competitive grant programs, each with a different focus.



# PENNDOT PATHWAYS

## Exploration & Analysis





Planning and Environmental Linkages Study

September 2021, Final

Transportation Revenue Options Commission (TROC) Report

July 2021, Final

## Potential Solutions

-  Managed Lanes
-  Congestion Pricing
-  Corridor Tolling
-  Mileage-Based User Fees
-  Fees & Taxes
-  Bridge Tolling

The Pennsylvania Public-Private Partnership (P3) law, as amended by Act 84 of 2022, permits optional tolling via Pennsylvania Public-Private Partnership (P3) contracts. Additional state legislation would be required to implement any other tolling options.

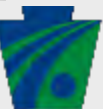
## Continued Study & Public Engagement

-  Technical Studies
-  Environmental Studies (NEPA)
-  Stakeholder Engagement
-  Public Involvement
-  Continued Review, Analysis and Information Sharing



# ANNUAL FUEL USAGE VS VMT

## ANNUAL GALLON USAGE VS VMT



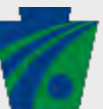
# PROGRAM

# PENNSYLVANIA LOCAL NETWORK



**Greenfield Ave. Bridge  
City of Pittsburgh**

- **Local Governments Own Over 78,000 miles**
- **Local Owned Bridges Over 6,600**
  - 26% of Deck Area in Good Condition
  - 53% of Deck Area in Fair Condition
  - 21% of Deck Area in Poor Condition



# PLANNING AND PROGRAMMING

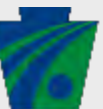


**11 PennDOT Districts**



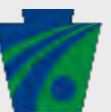
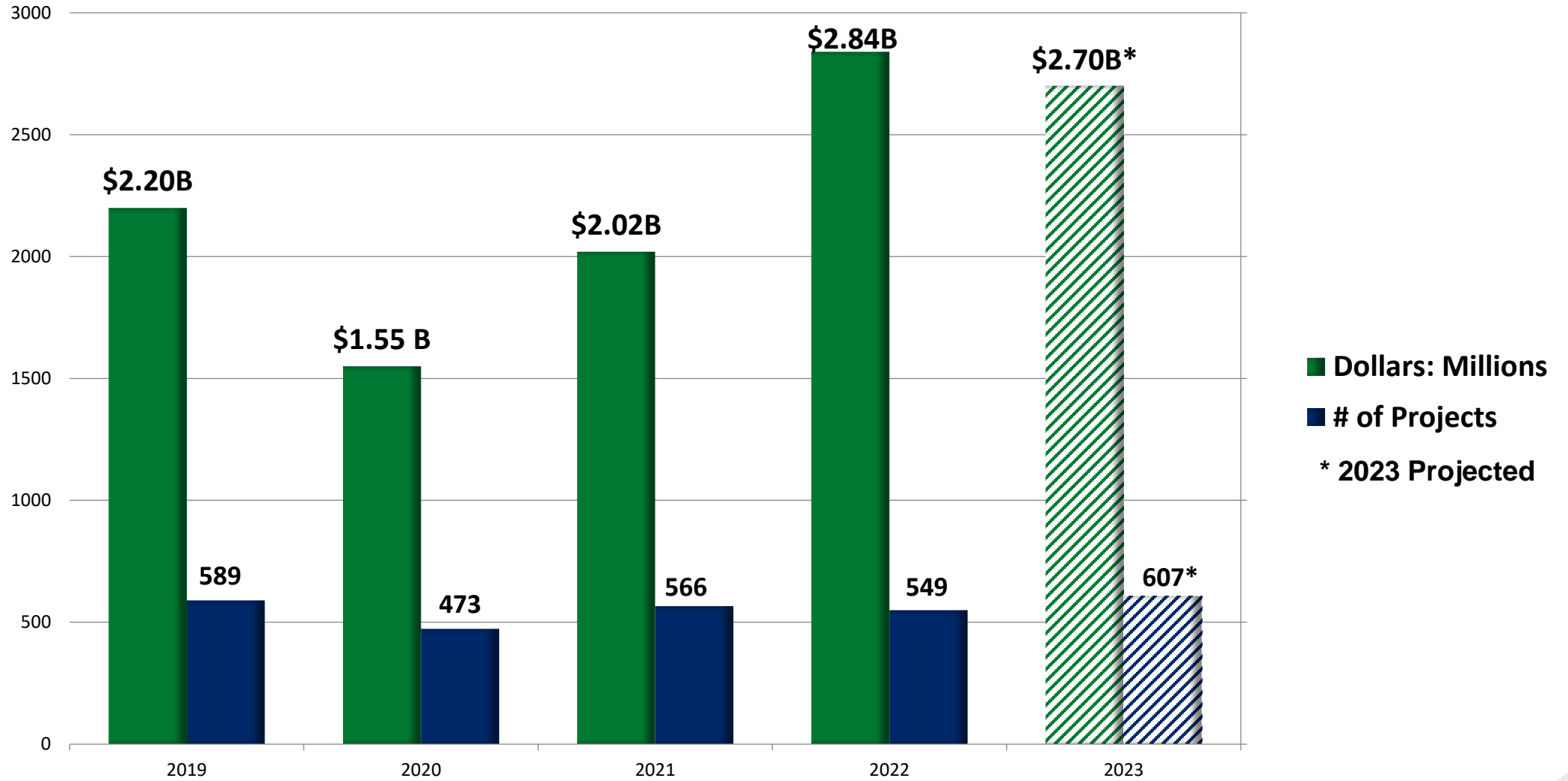
**23 Metropolitan and Rural Planning Organizations**

**2,560 Municipalities**  
**- 1,548 Townships**  
**- 956 Boroughs**  
**- 56 Cities**





# PROJECT LETTING TRENDS



# PROGRAM DISTRIBUTION

	Cost Based Percentage				
	2019	2020	2021	2022	2023
Highway	70%	61%	71%	73%	51%
Bridge	19%	24%	17%	19%	38%
Other	11%	15%	12%	8%	11%

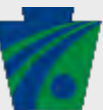
\*2023 Projected



# CONSTRUCTION MATERIAL QUANTITIES

Material	2018	2019	2020	2021	2022 thru October	2023*
Asphalt (Tons)	7,182,059	6,667,762	4,240,700	4,252,700	4,581,000	4,829,000
Structural Concrete (CY)	404,844	266,941	217,000	205,500	206,900	205,000
Concrete Paving (SY)	674,394	439,828 CSVT delayed	532,700	785,500	546,200	313,200
Aggregate (Tons)	8,996,689	8,271,575	5,388,700	5,408,300	5,458,200	5,198,000

\* Estimated Projections



# MOVING FORWARD INTO 2023

**We look forward to working with PAPA and its members in 2023!**



# FOLLOW PENNDOT



[www.PennDOT.gov](http://www.PennDOT.gov)



[www.DMV.pa.gov](http://www.DMV.pa.gov)



[PennsylvaniaDepartmentofTransportation](https://www.facebook.com/PennsylvaniaDepartmentofTransportation)



[PennDOTNews](https://twitter.com/PennDOTNews)



[PennsylvaniaDOT](https://www.instagram.com/PennsylvaniaDOT)



[PennDOTSec](https://www.facebook.com/PennDOTSec)



[/company/PennDOT](https://www.linkedin.com/company/PennDOT)



[PennDOTSec](https://twitter.com/PennDOTSec)



[PennsylvaniaDOT](https://www.youtube.com/PennsylvaniaDOT)