

2023 PAPA Regional Technical Meeting

2022 PennDOT LTS Review

2022 Summary of Lot Payments (LTS and HOLA Lots)

Categories:

- Wearing & Binder Courses (Old 409, New 413)
 - Standard (409A, 409APWL, 413STDPWL)
 - RPS (409B, 409BPWL, 413RPSPWL)
- Base Course
 - Standard (409A, 409APWL, 413STDPWL)
- SMA (419)

2022 Summary of Lot Payments (LTS and HOLA Lots)

Includes:

Laboratory Testing Section (LTS) Data

- Includes Partial Lot Payments (n=1 or n=2)
- Does not include lots that have District Special Provisions (DSP)

Asphalt Local Acceptance (ALA) Data

- Entered in eCAMMS and includes lot payment
- Includes Partial Lot Payments (n=1 or n=2)
- Does not include lots that have District Special Provisions (DSP)

2022 LTS SAMPLES OVERVIEW

NUMBER OF INCREMENTS PROCESSED BY LTS

	ACCEPTANCE	OTHER	TOTAL
IGNITION AND SOLVENT SAMPLES			
DENSITY SAMPLES			
LONGITUDINAL JOINT SAMPLES			
GMM SAMPLES			
		TOTAL	

2022 LTS SAMPLES OVERVIEW

NUMBER OF INCREMENTS PROCESSED BY LTS

	ACCEPTANCE	OTHER	TOTAL
IGNITION AND SOLVENT SAMPLES	5366		
DENSITY SAMPLES			
LONGITUDINAL JOINT SAMPLES			
GMM SAMPLES			
		TOTAL	

2022 LTS SAMPLES OVERVIEW

NUMBER OF INCREMENTS PROCESSED BY LTS

	ACCEPTANCE	OTHER	TOTAL
IGNITION AND SOLVENT SAMPLES	5366	764	6130
DENSITY SAMPLES			
LONGITUDINAL JOINT SAMPLES			
GMM SAMPLES			
		TOTAL	

2022 LTS SAMPLES OVERVIEW

NUMBER OF INCREMENTS PROCESSED BY LTS

	ACCEPTANCE	OTHER	TOTAL
IGNITION AND SOLVENT SAMPLES	5366	764	6130
DENSITY SAMPLES	5139		
LONGITUDINAL JOINT SAMPLES			
GMM SAMPLES			
		TOTAL	

2022 LTS SAMPLES OVERVIEW

NUMBER OF INCREMENTS PROCESSED BY LTS

	ACCEPTANCE	OTHER	TOTAL
IGNITION AND SOLVENT SAMPLES	5366	764	6130
DENSITY SAMPLES	5139	584	5723
LONGITUDINAL JOINT SAMPLES			
GMM SAMPLES			
		TOTAL	

2022 LTS SAMPLES OVERVIEW

NUMBER OF INCREMENTS PROCESSED BY LTS

	ACCEPTANCE	OTHER	TOTAL
IGNITION AND SOLVENT SAMPLES	5366	764	6130
DENSITY SAMPLES	5139	584	5723
LONGITUDINAL JOINT SAMPLES	1633		1633
GMM SAMPLES			
		TOTAL	

2022 LTS SAMPLES OVERVIEW

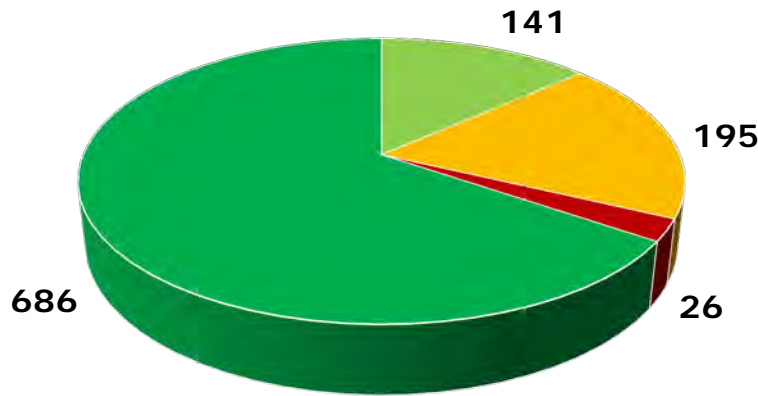
NUMBER OF INCREMENTS PROCESSED BY LTS

	ACCEPTANCE	OTHER	TOTAL
IGNITION AND SOLVENT SAMPLES	5366	764	6130
DENSITY SAMPLES	5139	584	5723
LONGITUDINAL JOINT SAMPLES	1633		1633
GMM SAMPLES	500		500
		TOTAL	13986

2022 Statewide Lot Payment Wearing and Binder Courses

Lot Payment Wearing & Binder

- Full Payment
- Reduced Payment
- Remove & Replace/50% Pay
- Bonus Pay



Total = 1048 Samples

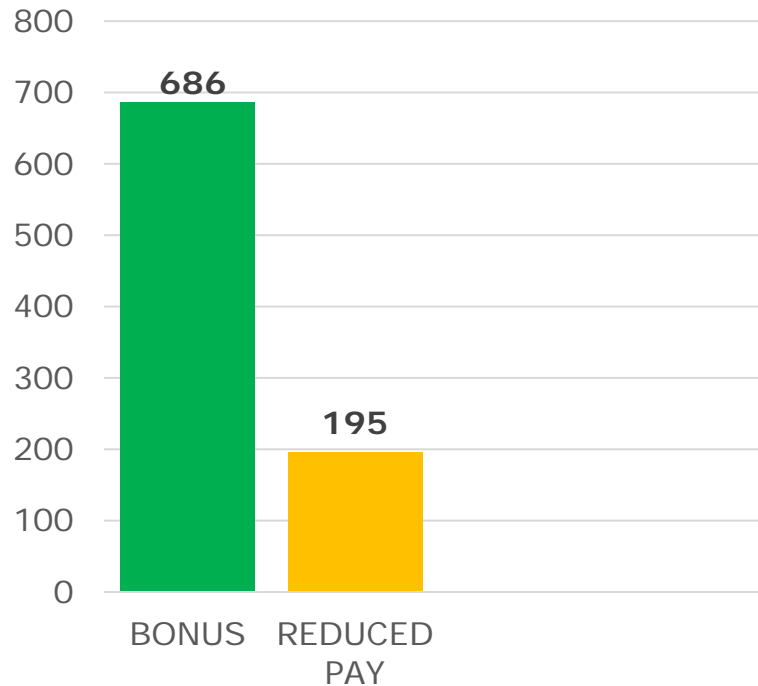
Bonus Payment	65.5%
Full Payment	13.5%
Reduced Payment	18.6%
Defective – R&R/50%	2.5%

Lots	Total	AC	No.200	Density
Defective	27	2	11	14

Bonus vs. Reduced Pay Wearing and Binder Courses

Pay Factor	No. of Samples	TOTAL
76%	1	195
79%	1	
80%	1	
81%	1	
83%	1	
84%	1	
85%	2	
86%	2	
87%	3	
88%	7	
89%	8	
90%	14	
91%	8	
92%	10	
93%	9	
94%	17	
95%	15	
96%	21	
97%	15	
98%	29	
99%	29	
100%	141	686
101%	74	
102%	130	
103%	71	
104%	411	

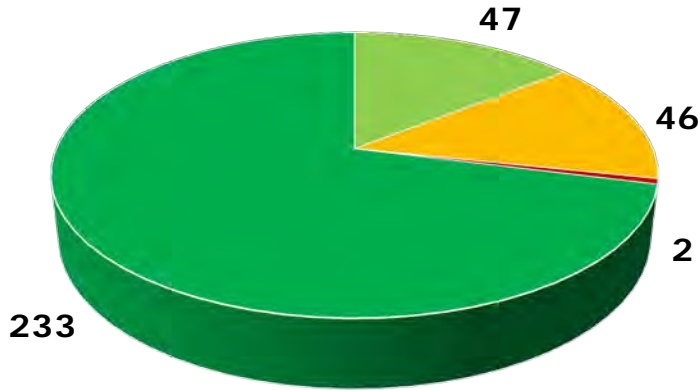
Number of Samples



2022 Statewide Lot Payment Base Courses

Lot Payment Base Course

- Full Payment
- Reduced Payment
- Remove & Replace/50% Pay
- Bonus Pay

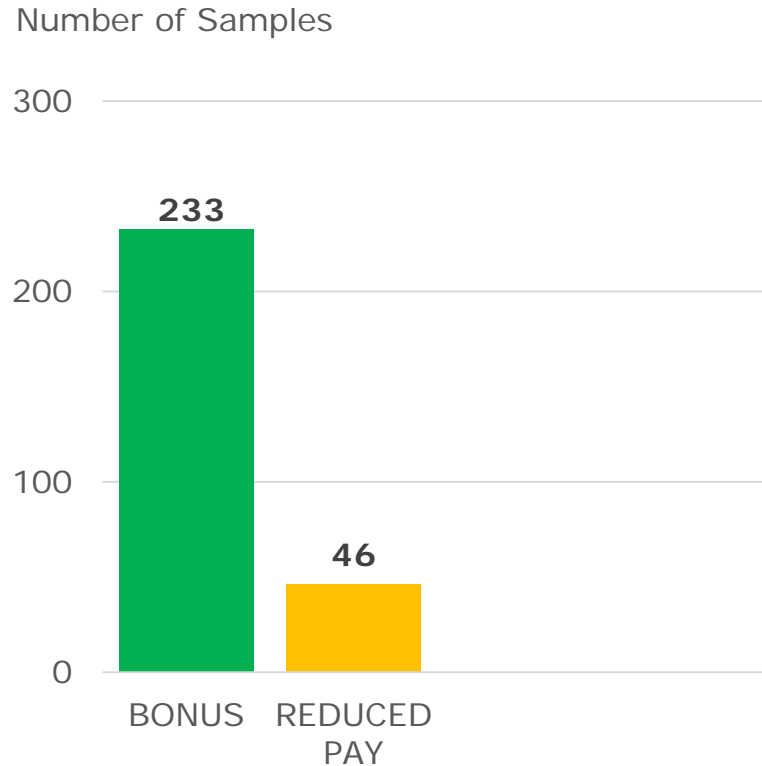


Total = 328 Samples

Bonus Payment	71.0%
Full Payment	14.3%
Reduced Payment	14.0%
Defective – R&R/50%	0.6%

Lots	Total	AC	No.200	Density
Defective	2	1	1	0

Bonus vs. Reduced Pay Standard Base Course

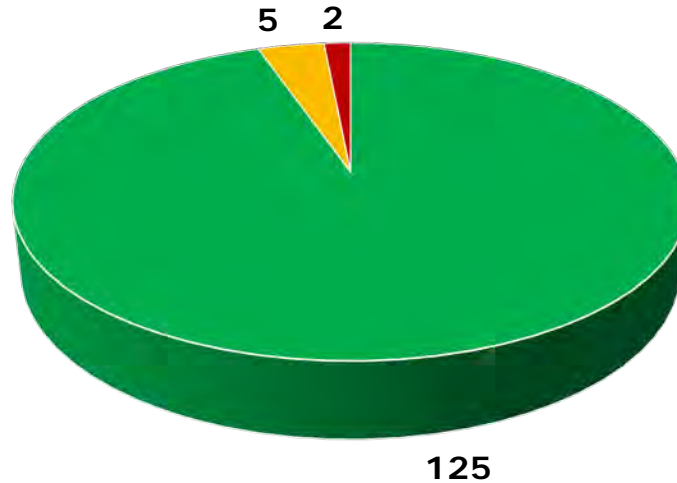


Pay Factor	No. of Samples	TOTAL
88%	1	46
89%	1	
90%	5	
91%	3	
92%	4	
93%	2	
94%	1	
95%	2	
96%	8	
97%	5	
98%	8	
99%	6	233
100%	47	
101%	12	
102%	36	
103%	20	
104%	165	

2022 Statewide Lot Payment SMA Wearing Courses

SMA Wearing Course

■ Full Payment ■ Reduced Payment ■ Remove & Replace/50% Pay



Total = 132 Samples

Full Payment	94.7%
Reduced Payment	3.8%
Defective – R&R/50%	1.5%

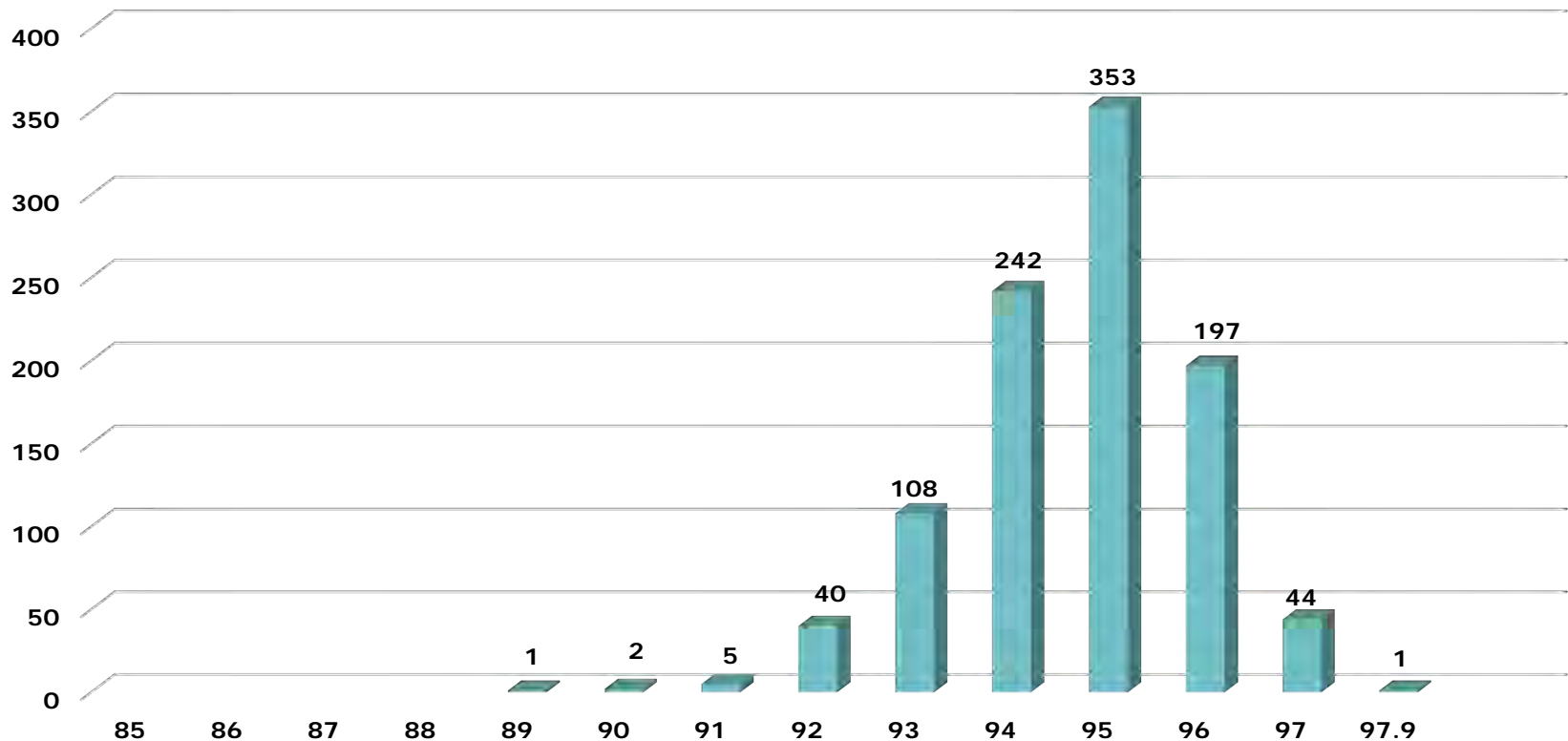
Lots	Total	AC	No.200	Density
Defective	2	2	1	0

2022 LTS LONGITUDINAL JOINT SAMPLES

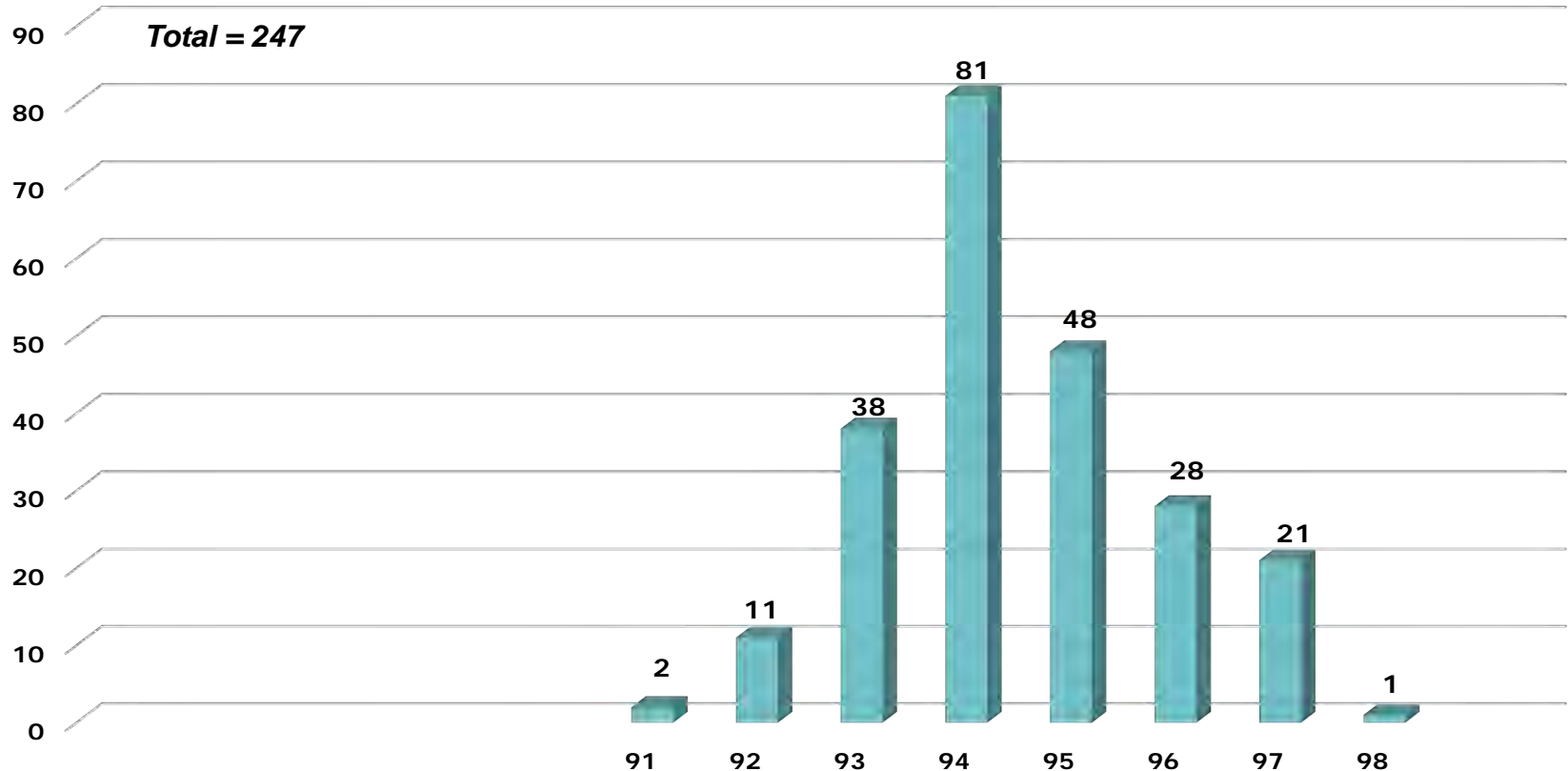
LONGITUDINAL JOINT SAMPLES	
NUMBER OF INCREMENTS	1633
NUMBER OF AVERAGES	496
INCENTIVE	DISINCENTIVE
\$ 1,249,675	\$ 121,900

2022 Statewide Density Distribution Wearing and Binder Courses – Lot Averages

Total = 993



2022 Statewide Density Distribution Base Courses – Lot Averages



eCAMMS UPDATES

Current System Status - There are currently no known issues.

Please note, Google Chrome is the recommended browser for eCAMMS and your first transaction of the day takes longer than subsequent transactions due to the system refreshing and loading cache. If you are making administrative changes to eCAMMS, it is also important to note that to accommodate the performance enhancements deployed with Release 14.2, system cache times have increased from every 20 minutes to once per hour.

eCAMMS Release 17 was successfully deployed on Monday, October 29. For full information on this release please see [What's New \(Tools - About\)](#).

When setting up a sample to which a Special Provision applies, check the Special Provisions checkbox and then begin typing any part of the Special Provision name in the dropdown box:

eCAMMS UPDATES Release 35

Release 35 ❖ November 2022

17

Advanced Search Changes	17
Lot Size and Unit of Measure are separated on the Advanced Search Export Results	17
A message is displayed when there are no Client Reports Pages for Right to Know Search Results	17
Construction Bulletin Search Page Change	17
The map viewer is no longer displaying REACTIVE code(s)	17
Sample Receiving Changes.....	17
Sample Receiving Optimization	17
System Changes	17
Bituminous updated to Asphalt on Internal and External Pages.....	18
Multiple Recurring Data Errors in the eCAMMS Error Logs are Resolved	18
Status Exports to the Reporting database after the Producer Status is updated on the same day.....	19

eCAMMS UPDATES Release 34

Release 34 ♦ June 2022

19

Advanced Search Changes	19
Advanced Search Export to Excel Performance Improvement.....	19
Deviation Page Changes	19
Date Format to be updated to MM/DD/YYYY Concrete Acceptance Deviation Maintenance Page.....	19
Deviations are Created When the Concrete Compressive Strength (PSI) is Less Than the Configured Value	19
JMF Changes	19
The RapidChloridePermeabilityAASHTO358 Field Added to the JMF Report.....	19
The Pozzolan Data is Included on the JMF Report.....	20
Maintenance Page Changes	20
No Errors When Status is Used for Search Criteria.....	20
Sample General	20
Sample Test Results Page Alignment is Correct on Monitors in Portrait Mode or Lesser Resolutions.....	20

eCAMMS UPDATES Release 34

Concrete Field Testing: Sample General Screen Displays Special Characters and Dates Properly.....	20
System Changes	20
All Attachments Must Have a File Extension	20
Multiple Recurring Data Errors in the eCAMMS Error Logs are Resolved	20
Test Results Changes	21
Rich Text is Properly Aligned and Spaced When Copied and Pasted from Microsoft Word	21

eCAMMS UPDATES Release 33.1

Release 33.1 ♦ April 2022

21

Sample General.....	21
Public Bulletin 14 Website Displays Different Colored Mapped Locations Based on the ASR C1293 Value.....	21

eCAMMS UPDATES Release 33

Release 33 ❖ March 2022

21

Bulletin 14	22
Public Bulletin 14 Website Displays Different Colored Mapped Locations Based on the ASR C1293 Value.....	22
Bulletin 15 Changes	22
Bulletin 15 Approval Notification.....	22
JMF Changes	22
Access to JMFs of Inactivated Plants	22
Updates to the JMF Trial Mix Design Page	22
Maintenance Page Changes	22
The Login Date is no Longer Updated During User Impersonation	22
User Status on the User Search Results Screen	23
Product Evaluations	23
The Ability to Strikethrough Text and Change Text Colors via Buttons on New Product Module Comment Windows	23
Display Text Properly on the Product Evaluation Determination Report.....	23
Multiple Product Applicant Users Can Access Collaborations.....	23
Void Attachments on Product Evaluations	23
Project Material Certification	23
TR-4238 PDF document updates	23
Sample General	23
Storing the Number of Pages in Client Reports for Right-To Know Requests	23
Revise Sample Group Functionality	24

eCAMMS UPDATES Release 33

Dropdown Box Enhancement on TR-447 Setup Page and New Sample Setup Page.....	24
System Changes	24
Veracode Scan Mitigation	24
Session Timeout Notification is Implemented on External Pages	24
Log4J Dependency Removal from Logs	24
Search and Export Results Function is Optimized.....	24
Test Results.....	24
Cascading Pass/Fail Determination.....	25

QUESTIONS?

Jay Sengoz

csengoz@pa.gov