



# PENNSYLVANIA TURNPIKE COMMISSION

64<sup>th</sup> Annual PAPA Conference  
January 16, 2024

Mark Compton, Chief Executive Officer

# Economic Engine

The PA Turnpike Commission is more than a roadway.

- A billion-dollar enterprise driving our state and national economies
- Generates, collects, and manages \$1.5 billion annually



**550+**  
MILES



**10**  
TUNNELS



**136**  
FACILITIES



NEARLY **90**  
INTERCHANGES



**851**  
BRIDGES

# Strengthening Communities

Moves **500,000+**  
people daily, providing communities  
with goods and services

Supports local businesses and communities  
by investing **\$600 million**  
annually through contracts and construction projects

Employs  
**1,300** people

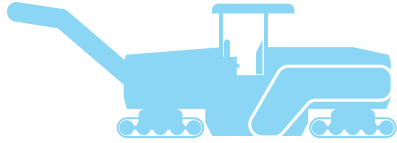
Invests in **large  
infrastructure  
projects**

**COMMUNITY**



# Pavement Priorities

# Pavement Priorities



Mill and Pave Projects Placed  
**2023 – 115 Lane Miles**  
**2024 – 38 Lane Miles**



Asphalt Mixture Placed  
**2023 – 955,600 Tons**  
**2024 – 282,437 Tons**



95% of Lots  
Received  
100% Payment

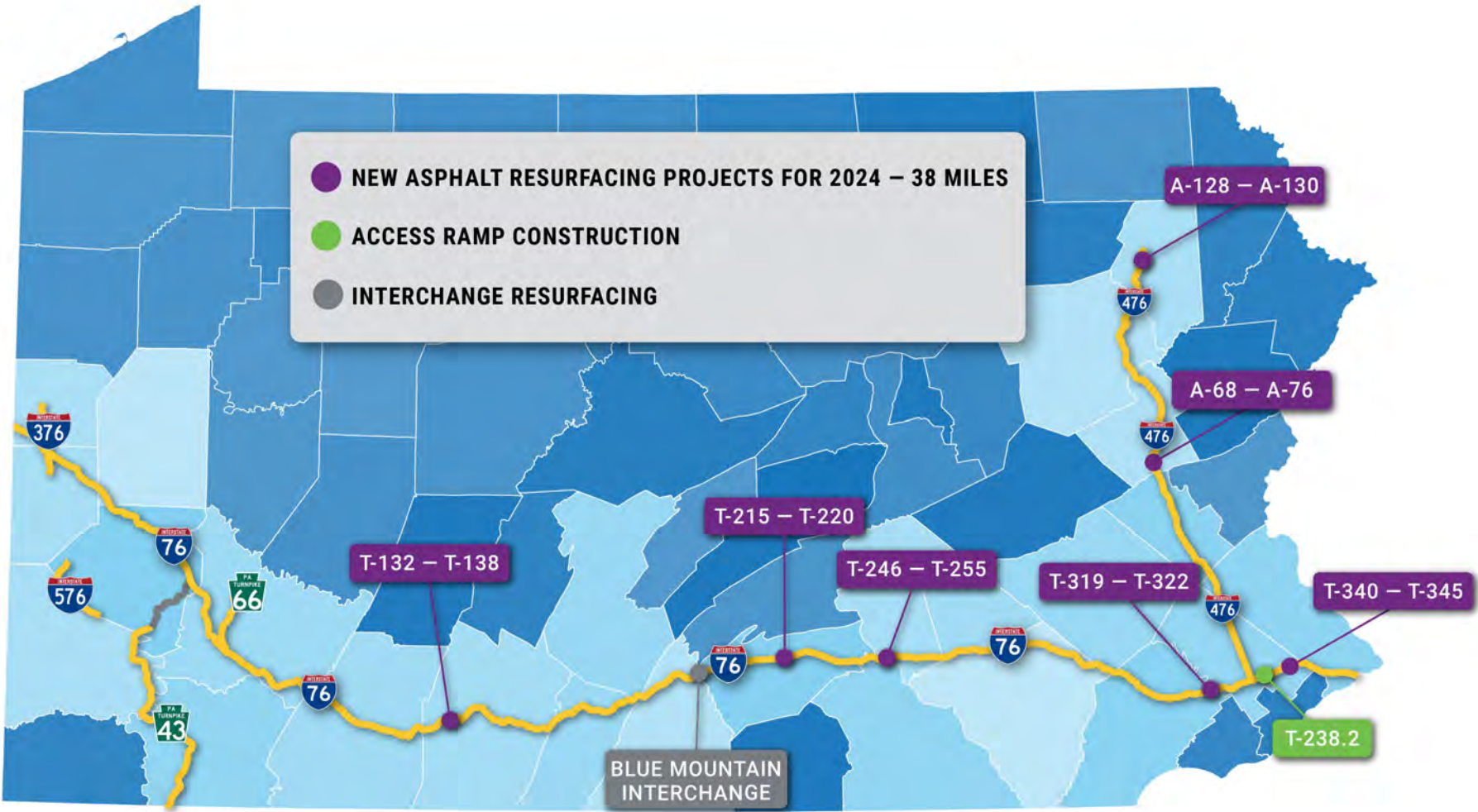


Average  
Payment  
Density  
95%



Average IRI  
46.3 Inches  
per Mile

- NEW ASPHALT RESURFACING PROJECTS FOR 2024 – 38 MILES
- ACCESS RAMP CONSTRUCTION
- INTERCHANGE RESURFACING





# Innovations in Safety

# Innovations in Safety

## Automated Work Zone Speed Enforcement

- Act 38 of 2023 makes the AWZSE Program permanent
- Over 8,868 deployments
- Over 1.1 million violations have been issued
- 15.7% are repeat offenders



## Truck-Mounted Attenuator Airhorns

- Physical barrier between traffic and the workers in the work zone
- Deter distracted driving and collisions







# Our Commitment to Sustainability

# Creating a Sustainable Culture

- 30-Year Commitment to Sustainable Best Practices in Transportation and Business Processes
- Only state agency to receive a 100% Certification Score from the GreenGov Council, twice
- Adopted the 17 U.N. Sustainable Development Goals
- Building a sustainable and restorative roadway through EV charging, solar, silent wind plants, and wireless connectivity





# VISION FOR A SUSTAINABLE ROADWAY 2040



Microgrid/Solar

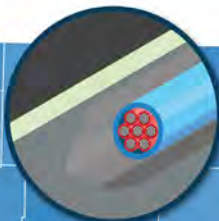
In-Road Fiber Optic Network

Connected Vehicle Technology

Buried Electric Transmission Lines

Inductive Charging

Silent Wind Plant



-  SERVICE PLAZA
-  MAINTENANCE FACILITY
-  PTC ADMINISTRATIVE BUILDING
-  EXIT
-  ROADWAY
-  MICROGRID/SOLAR
-  IN-ROAD FIBER OPTIC NETWORK
-  CONNECTED VEHICLE TECHNOLOGY
-  BURIED ELECTRIC TRANSMISSION LINES
-  INDUCTIVE CHARGING
-  SILENT WIND PLANT

# Solar Microgrid - Greensburg



- 1.3 MW of Solar Power
- 1.35 MW from Natural Gas
- Tax Incentives
- ROI in 6 Years
- Projected to Generate \$450-\$650K Annually
- 20-Year Net Income to PTC will be \$8 to \$9 Million



# Open Road Tolling Conversion

# Open Road Tolling Conversion – 2025/26

## **All tolling points move to the roadway, using overhead gantries to replace traditional exit/entry points.**

- Phased Implementation 2025/27
  - East of Reading and the N.E. Extension early 2025
  - Western Implementation early 2027
- Interchange building demolition in 2025-2027



# Open Road Tolling Benefits



## Meets customer expectation

- Clear preference for electronic tolling methods; 85+ adoption of E-ZPass
- National standard

## Increases access



- Built at a fraction of the cost of an interchange
- Increases ability to fulfill the access requests we receive from communities across the Commonwealth
- \$25 million in savings per year on operations and maintenance



## Safer

- Eliminates confusion and lane switching at exit/entry



## Increases mobility

- Eliminates travel-time impacts of traditional tolling



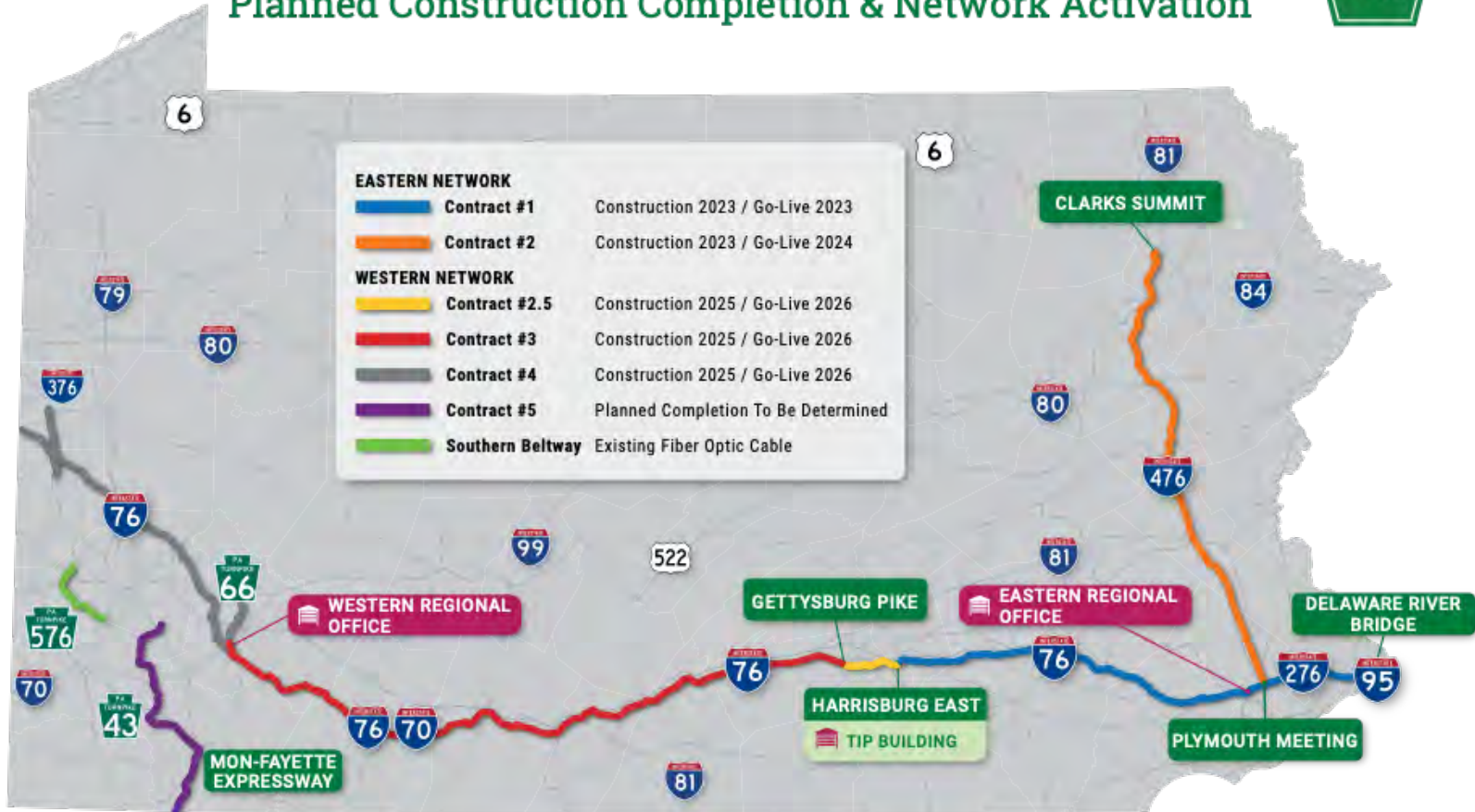
## Better for the environment

- Continuous travel results in lower emissions
- Smaller physical footprint

# PA TURNPIKE FIBER OPTIC NETWORK



## Planned Construction Completion & Network Activation





# Connect with Us

## Subscribe



Sign up to receive  
our monthly  
Road Ahead e-Newsletter

## Follow



Connect with us on  
Facebook, Twitter  
and LinkedIn

## Request a Speaker



Check out the  
PTC Speakers' Bureau



Questions?