

# PAPA BUS TOUR DISTRICT 9-0 OVERVIEW

DAVID S. KAMMERER, P.E., PENNDOT DISTRICT 9  
ACTING DISTRICT EXECUTIVE

# DISTRICT 9 – DISTRICT EXECUTIVE CHANGES

## Acting District Executive Rotation

### **April and May**

Vince Greenland, P.E., Assistant District Executive - Design

[vgreenland@pa.gov](mailto:vgreenland@pa.gov)

(o)814-696-7151

(c)814-937-7661

### **June and July**

Brad Brumbaugh, P.E., Assistant District Executive - Construction

[brbrumbaugh@pa.gov](mailto:brbrumbaugh@pa.gov)

(o)814-696-7130

(c)814-932-7839

### **August and September**

David Kammerer, P.E., Assistant District Executive - Maintenance

[dakammerer@pa.gov](mailto:dakammerer@pa.gov)

(o)814-696-7176

(c)814-207-2205



# DISTRICT 9: OVERVIEW



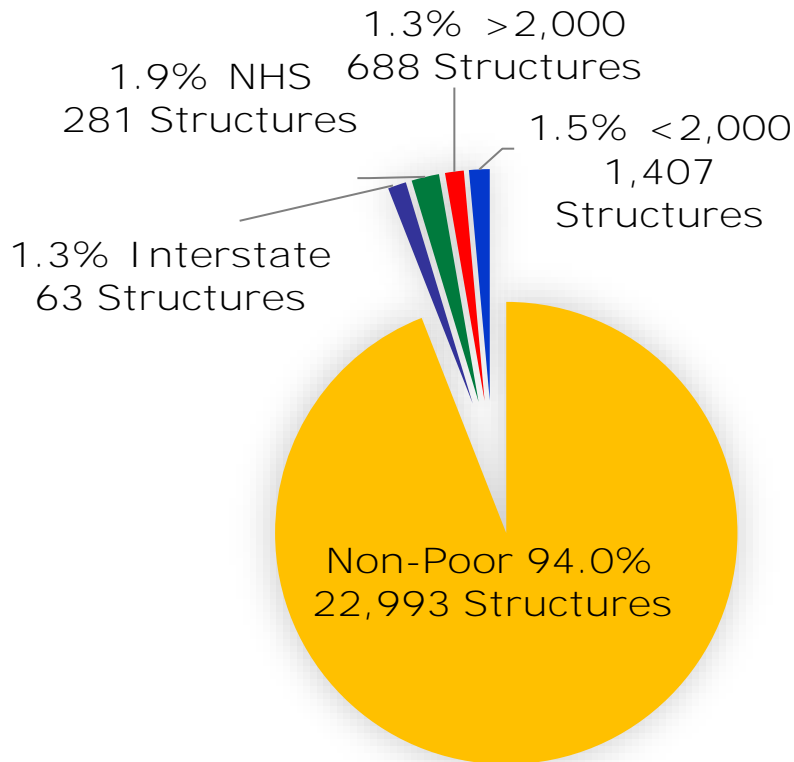
- Six Counties (southcentral region)
  - Three Planning Regions
    - Southern Alleghenies RPO
      - Bedford, Fulton, Huntingdon, & Somerset Counties
    - Blair MPO
    - Cambria MPO
- 883 Employees
- Bridges
  - 2,102 State Bridges
    - 2.5% Poor Deck Area
      - 80% on < 2000 ADT
  - 462 Local Bridges
    - 18.8% Poor Deck Area
- 4,004 Miles of Roadway
  - 14% Poor IRI
    - 93% on < 2000 ADT



# BRIDGE AND ROADWAY ASSETS - STATEWIDE

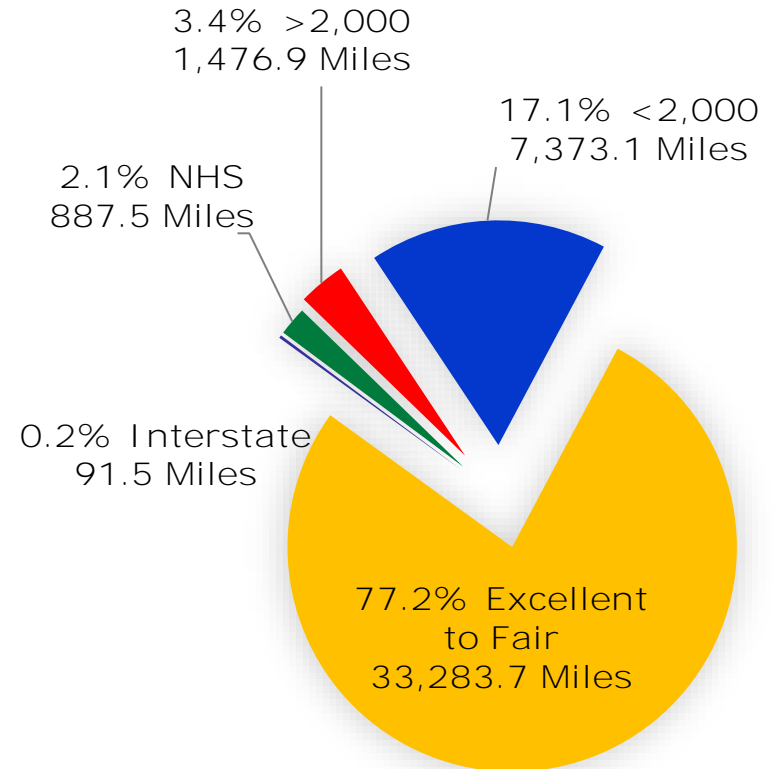
## Bridge

6.0% Poor Deck Area  
(2,439 structures)



## Roadway

22.8% Poor IRI  
(9,829 miles)



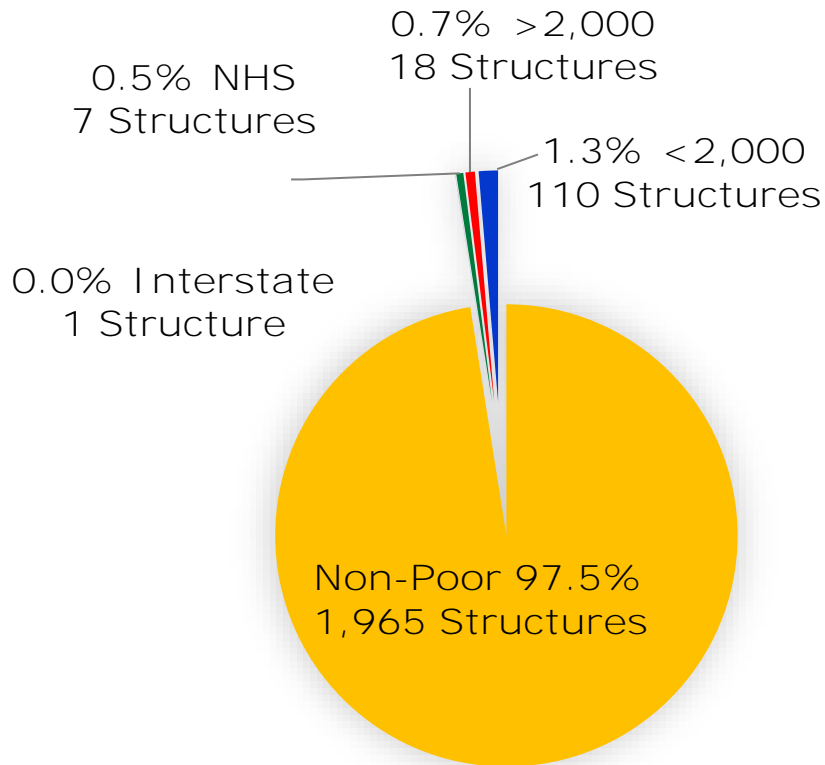
Data from 2021 Annual Performance Measures Reports



# BRIDGE AND ROADWAY ASSETS – DISTRICT 9-0

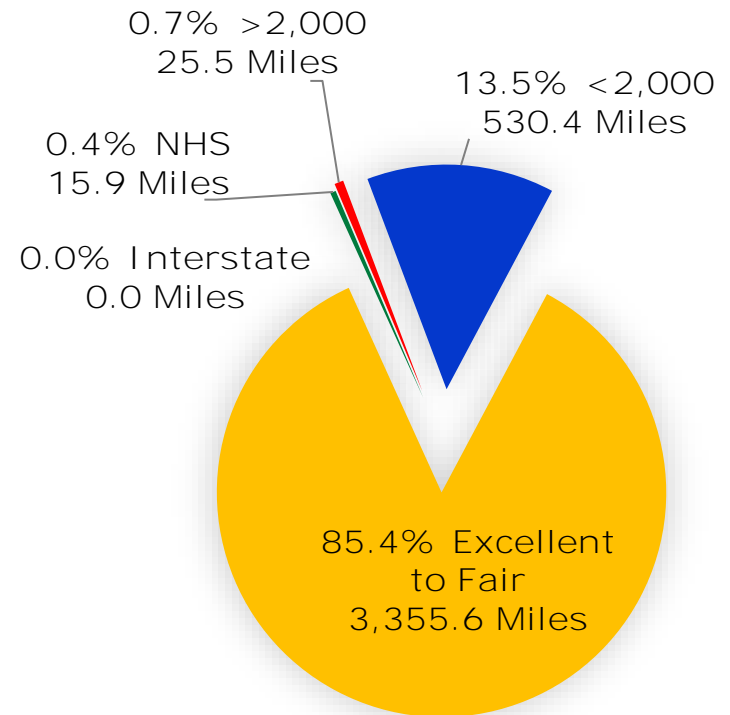
## Bridge

2.5% Poor Deck Area  
(136 structures)



## Roadway

14.6% Poor IRI  
(571.8 miles)

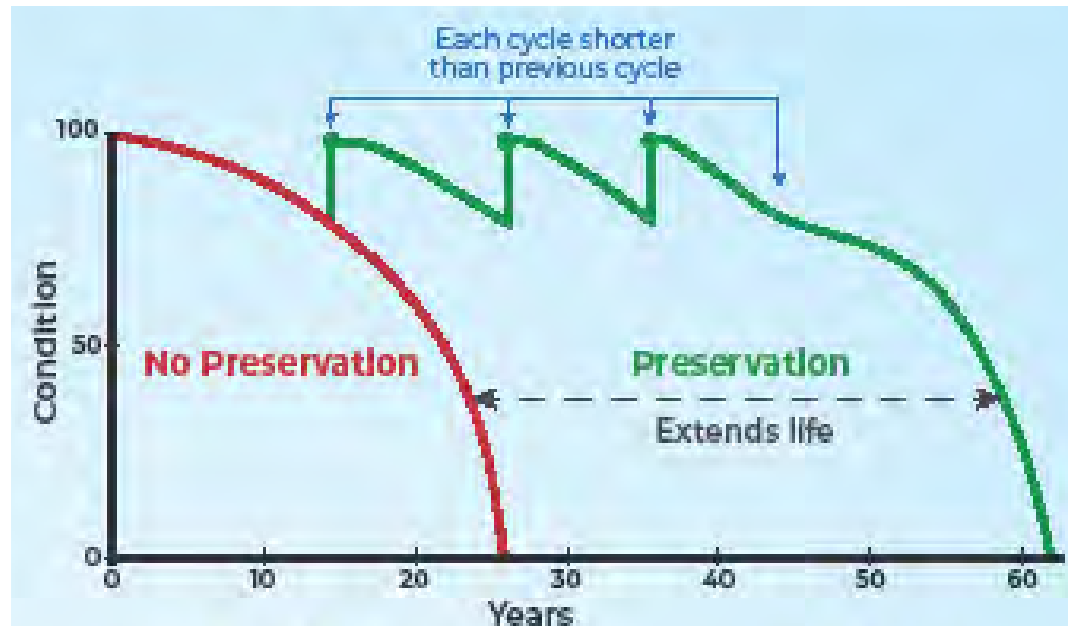


Data from 2021 Annual Performance Measures Reports



# LOWEST LIFE CYCLE COST (LLCC)

- Manage assets over their entire life
- The right treatment to the right asset at the right time to extend the life for lowest practicable cost
- Maximize life, minimize costs
- LLCC  $\neq$  worst first (at the network level)



# ROADWAY PAVEMENT SYSTEM

CO	SR	BEG SEG	BEG OFF	END SEG	END OFF	BEGIN DESC.	END DESC.	SEG MILES	AVG SURF YEAR	AVG BPN	HIGH / LOW TREAT	AVG ADT	AVE TRK %	AV G TRK ADT	AVG IRI	IRI	AVG OPI	OPI	OOC	DATA SCORE	VISUAL SCORE (POSSIBLE 5)	TOTAL SCORE (100 POSSIBLE)	ON THE DOI? (Y or N)	DOI PROGRAM	DOI PERIOD	PREVIOUS 5-YEAR PLAN RESURFACE YEAR (Proposed Year in Italics)	RESURFACE YEAR (IP, 409)	2021 RC Ranking	RC Field Viewed
5	1033	10	0	10	1323	US 30	SR 1001	0.3	2004	3	L	3806	8.0	304	163	Fair	65	Fair	Y	55.5	15.0	70.5	N		<i>2025</i>	<i>2025</i>	7	Y	
5	30	380	0	481	1421	SR 4010	SR 8014	11.3	2005	3	H	9264	12.1	1122	92	Exc	85	Good	Y	39.5	25.0	64.5	N			<i>2027</i>	1	Y	
5	1029	10	0	10	637	SR 1004	SR 1044	0.1	2013	3	L	8611	5.0	431	204	Poor	82	Good	N	64.6		64.6	Y	DOI	3				
5	30	490	0	621	2720	SR 8014	Juniata Rvr Brdg	15.4	2004	3	H	5507	17.1	940	85	Exc	87	Good	Y	38.9	23.0	61.9	N			<i>2026</i>	2	Y	
5	220	10	0	100	2024	Maryland State Line	Narrow Lane	5.4	2007	2	H	4611	18.0	830	91	Good	85	Good	Y	44.6	15.0	59.6	N			<i>2024</i>	4	Y	

- District Roadway Asset Management Committee
  - Continued success utilizing the District's Roadway Risk Assessment tool to select, prioritize and scope resurfacing projects



# 2023 TIP FINANCIAL GUIDANCE

	Original Guidance FFY 2023-2026 (\$000's)	BIL Estimates FFY 2023-2026 (\$000's)*	Increase (\$000's)	Increase (%)
<b>Blair MPO</b>	\$44,750	\$66,492	\$21,742	<b>48.59%</b>
<b>Cambria MPO</b>	\$65,669	\$95,500	\$29,831	<b>45.43%</b>
<b>S Alleghenies RPO</b>	\$134,284	\$198,598	\$64,314	<b>47.89%</b>
<b>District 9</b>	<b>\$244,703</b>	<b>\$360,590</b>	<b>\$115,887</b>	<b>47.36%</b>

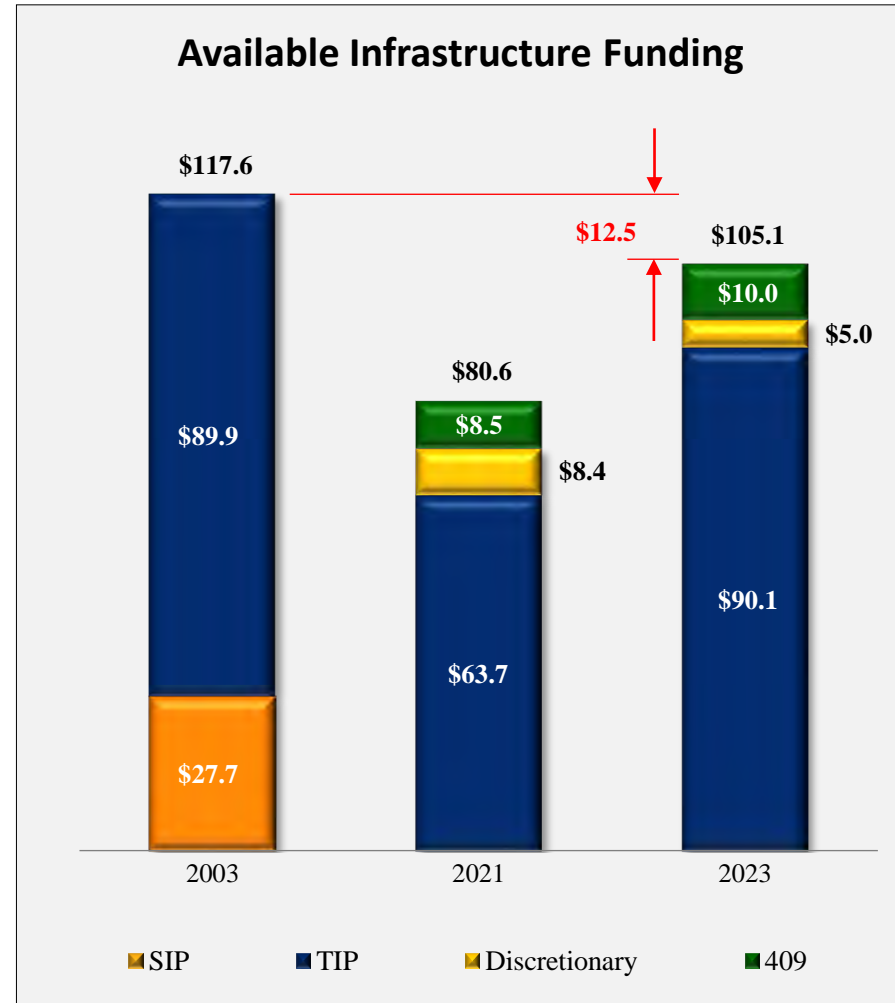
\* Does not include Carbon Reduction Program (CRP) Funds





# INFLATION IMPACTS

- Inflation impacts in 2022:
  - Bid Prices
    - 9.3% increase
  - 2022 vs 2021 Construction Season Prices (Based on average prices April – October)
    - Asphalt Index adjustments – 45.5% increase
    - Diesel Index prices – 95.5% increase
  - 2022 vs 2021 Maintenance costs
    - Sealcoat Oil - 16% increase
    - Sealcoat Stone - 25% increase
    - Salt prices - 15% increase
- 2023 vs 2003
  - Bipartisan Infrastructure Law (BIL) helped
  - Funding levels are below 2003 levels

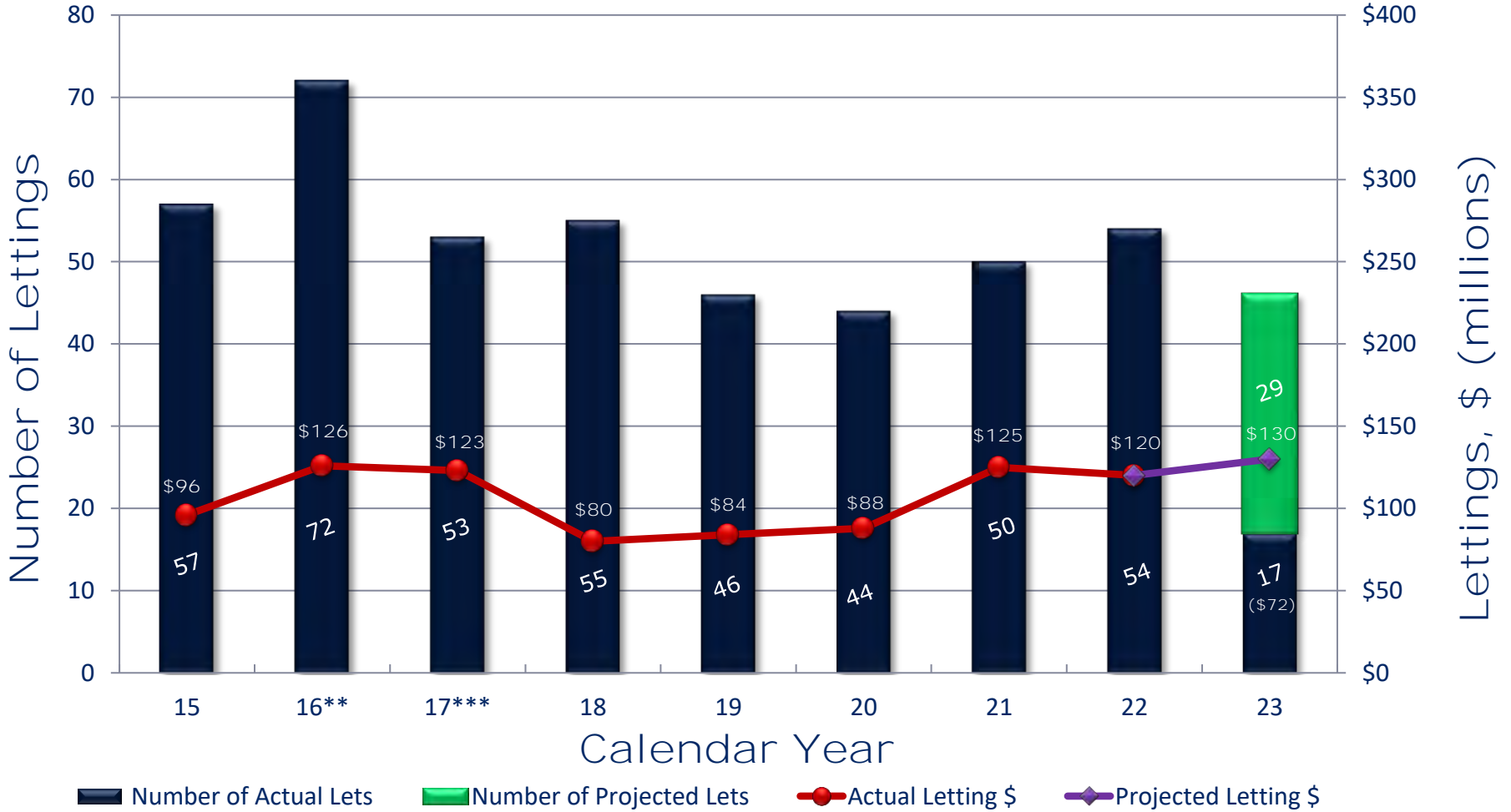


# DISTRICT 9 2023 TIP PROGRAM SUMMARY

	Total		Roadway			Bridge		
	\$000s	#	\$000s	#	%	\$000s	#	%
<b>Blair MPO</b>	\$ 66,492	62	\$ 36,679	22	55.2%	\$ 29,813	40	44.8%
<b>CCMPO</b>	\$ 95,500	58	\$ 60,645	28	63.5%	\$ 34,855	30	36.5%
<b>S Alleghenies</b>	\$ 198,598	121	\$ 104,605	35	52.7%	\$ 93,993	86	47.3%
<b><i>District 9-0</i></b>	<b>\$ 360,590</b>	<b>241</b>	<b>\$ 201,929</b>	<b>85</b>	<b>56.0%</b>	<b>\$ 158,661</b>	<b>156</b>	<b>44.0%</b>



# DISTRICT 9-0 PROJECT LETTINGS



\*\* 2016 totals do not include US 219 Somerset to Meyersdale Paving Contract (\$52M)  
 \*\*\* 2017 totals do not include US 219 ITS Contract (\$1.6M); Includes I-99 (\$27.8M)



# 2021-2023 CY LETTINGS DISTRICT 9-0

	2021	2022	2023
Construction Estimate	\$125 million	\$120 million	\$130 million
Letting Count	50	54	45
Miles Resurfaced	158	123	113
Number of Bridges	45	36	74
Safety Projects	4	8	13



# NOTABLE PROJECTS AND SITES WITHIN DISTRICT 9

# US 219 NEW 4-LANE



- Appalachian Development Highway System (ADHS) Corridor N
- Somerset to Meyersdale (11 miles)
    - Open to Traffic 2018
  - Meyersdale Bypass (4 miles)
    - Open to Traffic 1998
  - Meyersdale Bypass to MD State Line (5.4 miles) - In Design
  - MD State Line to Old Salisbury Rd (1.1 miles) – In Design
  - Old Salisbury Rd to I-68 (1.5 miles)
    - Open to Traffic 2021



# US 219 – SOMERSET TO MEYERSDALE BYPASS



- Appalachian Development Highway System (ADHS) Corridor N
- 11 mile 4-lane relocation between Somerset and Meyersdale
- 2013 - Construction began
- 11/21/18 - Opened to traffic
- \$262M Construction



# US 219 - MEYERSDALE TO OLD SALISBURY RD



## Overview

- 4-lane relocation of 8 miles of US 219 from the I-68 interchange in Garrett County, Maryland to the southern terminus of the Meyersdale Bypass in Somerset County
  - 1.5 mile portion in Maryland opened to traffic on May 5, 2021
  - Remaining portion in Pennsylvania currently in PE
    - This project, which is the last remaining piece of Appalachian Development Highway System (ADHS) Corridor N, was deferred in 2008 due to funding constraints
    - Pennsylvania is currently working as the lead state in a cooperative effort with Maryland to advance the project through the NEPA process

## Anticipated Timeline – Pending Funding

- Complete NEPA & Preferred Alignment Selected: Spring 2025
- Complete Final Design/ROW/Permitting: Winter 2028
- Complete Construction Activities: Winter 2031

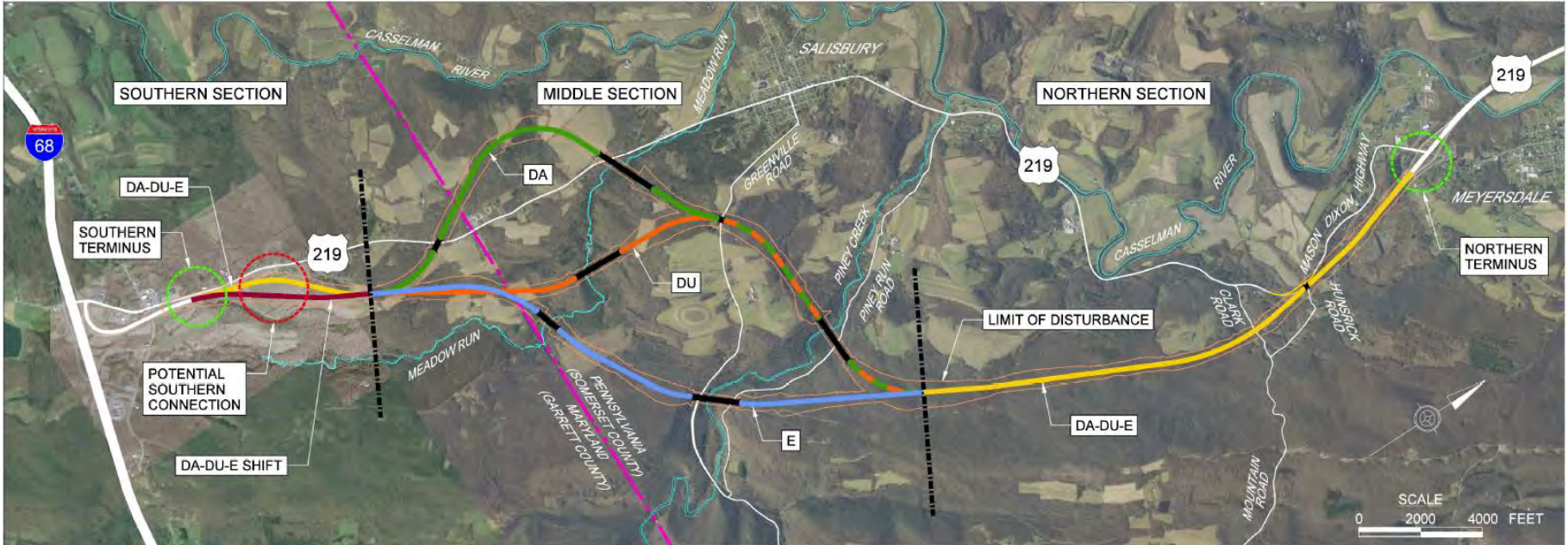
## Total Estimated Project Cost

- (PA Portion Only): \$300M





# US 219 - MEYERSDALE TO OLD SALISBURY RD



POTENTIAL SECTION COMBINATIONS

PEL ALIGNMENTS (2016)	ALIGNMENT (2022)	SOUTHERN SECTION	MIDDLE SECTION	NORTHERN SECTION
<i>D, AGENCY</i>	➔ DA	Yellow	Green	Yellow
<i>D, AGENCY, E SHIFT</i>	➔ DA SHIFT	Yellow	Green	Yellow
<i>D, USFWS, USACOE2</i>	➔ DU	Yellow	Orange	Yellow
<i>D, USFWS, USACOE2, E SHIFT</i>	➔ DU SHIFT	Yellow	Orange	Yellow
<i>E</i>	➔ E	Yellow	Blue	Yellow
<i>E SHIFT</i>	➔ E SHIFT	Yellow	Blue	Yellow

**LEGEND**

- SECTION BREAK
- MARYLAND / PENNSYLVANIA STATE LINE
- ( ) — PROPOSED BRIDGE



# HORSESHOE CURVE NATIONAL HISTORIC LANDMARK



- 5 miles west of Altoona
- Three-track railroad curve on Norfolk Southern's - Pittsburgh Line
- Nearly  $\frac{1}{2}$  mile long and  $\frac{1}{4}$  mile diameter
- Completed in 1854 by Pennsylvania Railroad
  - Reduced WB grade to summit of the Allegheny Mountains
  - Replaced Allegheny Portage Railroad, which was a series of canals and inclined planes
- Tourist Attraction
  - 1879 trackside observation park completed
  - 1990's – Park renovation and visitor center construction
- Historic Significance
  - 1966 - National Historic Landmark
  - 2004 - National Historic Civil Engineering Landmark
- Target of German saboteurs uncovered by FBI in June 1942 (3 months after US entry into WWII)



# FLIGHT 93 NATIONAL MEMORIAL



- 9/11/01 - United Airlines Flight 93 enroute to San Francisco, CA from Newark, NJ was hijacked and crashed into a field in Somerset County with 40 passengers and crew on board
- 2002 – National Memorial Designation
- 9/10/11 - Memorial Plaza and Wall of Names opened to public
- 2015 - Visitor Center Complex completion
- 9/10/20 - Tower of Voices completion



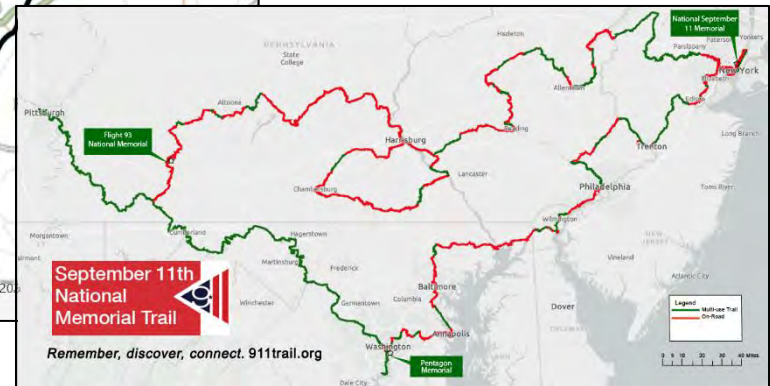
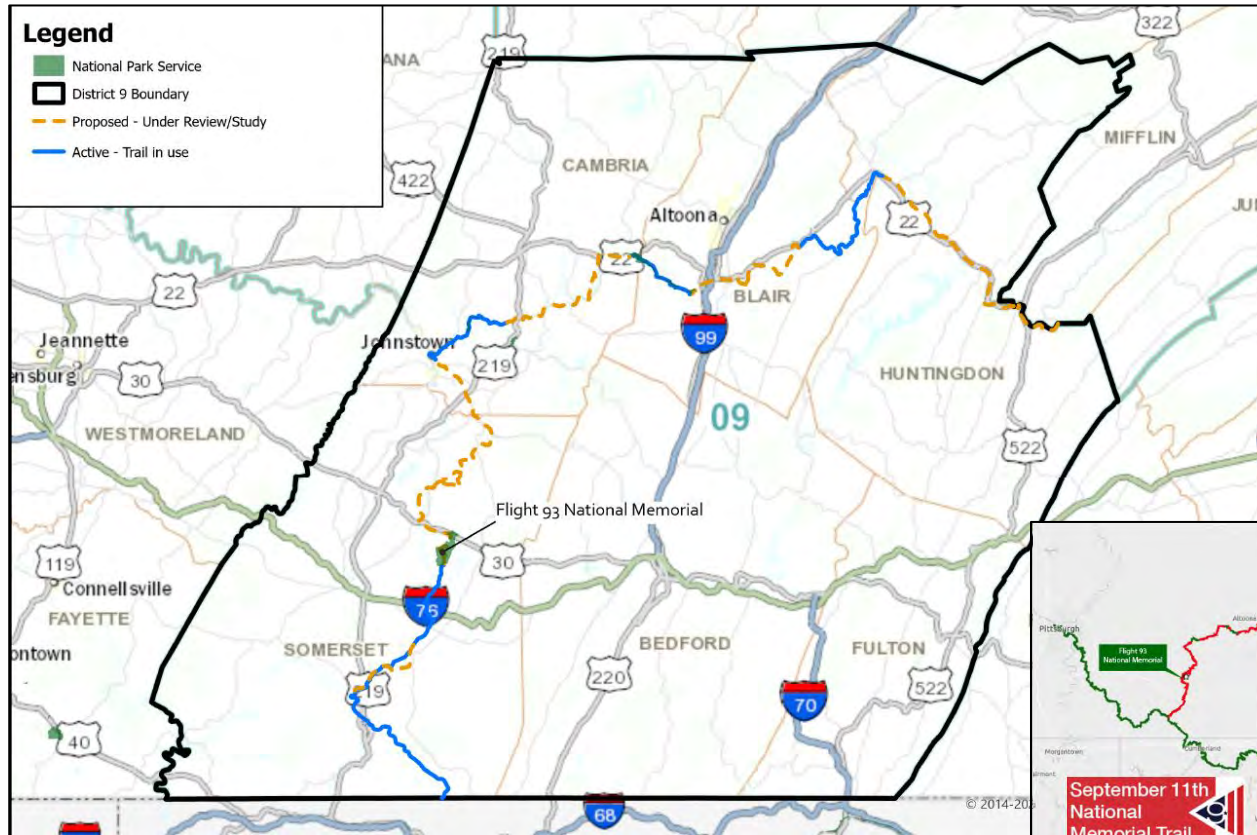
# FLIGHT 93 MEMORIAL ACCESS ROAD



- 2.3 mile access road from US 30 to Flight 93 National Memorial
  - Cul-de-sac 2 local roads
  - Turn lane on US 30
- \$8.5M Construction funding transferred to National Park Service (NPS) for administration
- Design Challenges
  - ROW from NPS
  - Wetland Mitigation
  - Archaeology
  - NPDES Permit
  - Mine Reclamation Coordination with DEP
- Opened to traffic 2011, prior to 10-year anniversary of September 11<sup>th</sup>



# SEPTEMBER 11<sup>TH</sup> NATIONAL MEMORIAL TRAIL



- 1300-mile trail that forms a loop connecting the National September 11<sup>th</sup> Memorial and Museum in New York City, the National 9/11 Pentagon Memorial in Arlington, VA, and the Flight 93 National Memorial in Shanksville, PA
- Managed by the September 11<sup>th</sup> Memorial Trail Alliance



## District 9 Locations - Completed or Existing:

- Blair County
  - Cresson to Foot of Ten (6 to 10 Trail)
  - Canoe Creek State Park to Alfarata, Huntingdon County (Lower Trail)
- Cambria County
  - Johnstown to Ehrenfeld (Path of the Flood Trail)
- Somerset County
  - Off-Road
    - Maryland to Garrett (Great Allegheny Passage)
    - Great Allegheny Passage (GAP) in Garrett, north 1.25 miles to Berlin (off-road)
      - \$400,000 Federal Lands Access Program (FLAP) funding
      - Completed June 2021
  - On-Road
    - Signage Plan approved from end of trail north to Flight 93 Memorial in Shanksville
      - Signs are in the process of being installed



# SEPTEMBER 11<sup>TH</sup> NATIONAL MEMORIAL TRAIL

## District 9 Locations - Underway:

- Blair County
  - On-road signage plan currently under review to connect 6 to 10 Trail in Foot of Ten (south of Duncansville) to Lower Trail in Frankstown Township
- Cambria County
  - Allegheny Ridge Corporation completed Main Line Canal Greenway (Segment of September 11th National Memorial Trail) Feasibility Study to identify potential alignments connecting Ehrenfeld Borough to Portage Borough
- Huntingdon County
  - Allegheny Ridge Corporation completed Main Line Canal Greenway (Segment of September 11th National Memorial Trail) Feasibility Study to identify potential alignments for multi-use trail connecting the Lower Trail west of Alfarata, Huntingdon County to Victory Park in Lewistown, Mifflin County
- Somerset County
  - Multi-Use Off-road trail beginning at Trail north of Garrett and continuing to Berlin
    - \$600,000 in FLAP funds received for Preliminary Engineering
    - Anticipated to begin 3<sup>rd</sup> Quarter 2023
  - On-road
    - Trail Alliance currently coordinating with District for approval of on-road signage plan for route connecting Flight 93 Memorial north to Windber



# *Thank You*

Questions?

