

# **2019 PAPA Regional Technical Meetings**

2018 PennDOT LTS Review

# 2018 Summary of Lot Payments (Non-PWT LTS and HOLA Lots)

## Categories:

- Wearing & Binder Courses (409)
  - RPS (409 B)
  - Standard (409 A)
- Base Course (409)
  - Standard (409 A)
- SMA (419)

# 2018 Summary of Lot Payments (Non-PWT LTS and HOLA Lots)

Includes:

## Laboratory Testing Section (LTS) Data

- Includes Partial Lot Payments (n=1 or n=2)
- Does not include lots that have District Special Provisions (DSP)

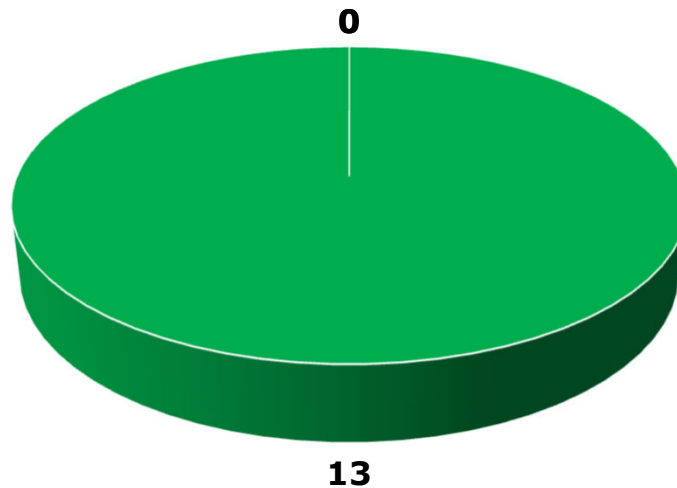
## Asphalt Local Acceptance (ALA) Data

- Entered in eCAMMS and includes lot payment
- Includes Partial Lot Payments (n=1 or n=2)
- Does not include lots that have District Special Provisions (DSP)

# 2018 Statewide Lot Payment RPS Wearing and Binder Courses

## RPS Lots Wearing & Binder

■ Full Payment ■ Reduced Payment ■ Remove & Replace/50% Pay



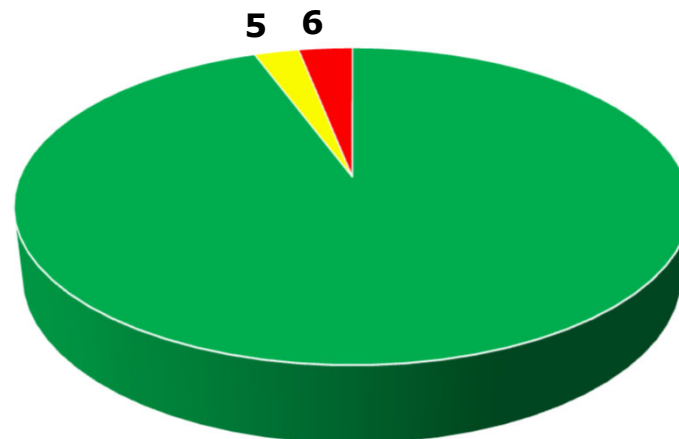
Full Payment	100%
Reduced Payment	0%
Defective – R&R/50%	0%

Lots	Total	AC	No.200	Density
Reduced Payment	0	0	0	0
R&R / 50%	0	0	0	0

# 2018 Statewide Lot Payment Standard Wearing and Binder Courses

## Standard Lots Wearing & Binder

■ Full Payment ■ Reduced Payment ■ Remove & Replace/50% Pay



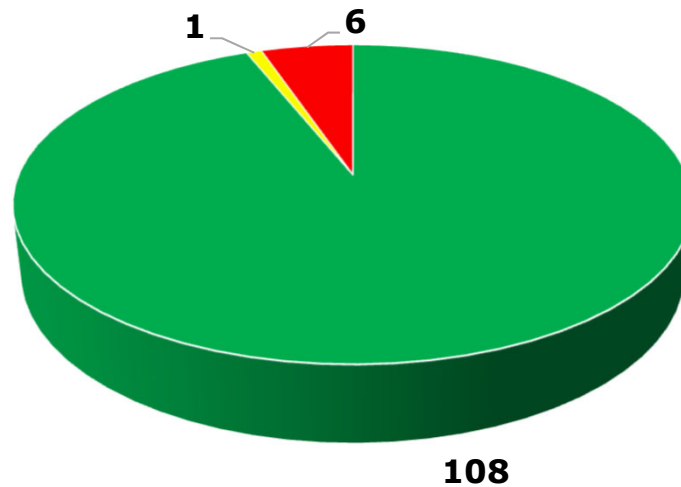
Full Payment	94.4%
Reduced Payment	2.6%
Defective – R&R/50%	3.1%

Lots	Total	AC	No.200	Density
Reduced Payment	5	0	0	5
R&R / 50%	6	2	3	1

# 2018 Statewide Lot Payment Standard Base Courses

## Standard Lots – Base Courses

■ Full Payment ■ Reduced Payment ■ Remove & Replace/50% Pay



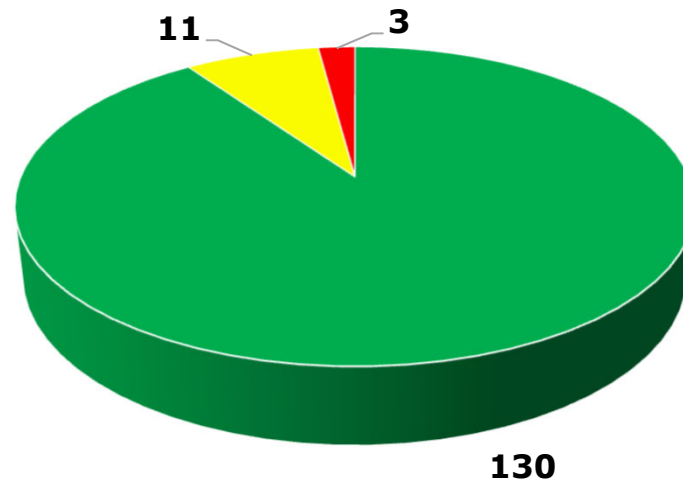
Full Payment	93.9%
Reduced Payment	0.9%
Defective – R&R/50%	5.2%

Lots	Total	AC	No.200	Density
Reduced Payment	1	1	0	0
R&R / 50%	6	5	1	0

# 2018 Statewide Lot Payment SMA Wearing Courses

## SMA Lots (Section 419)

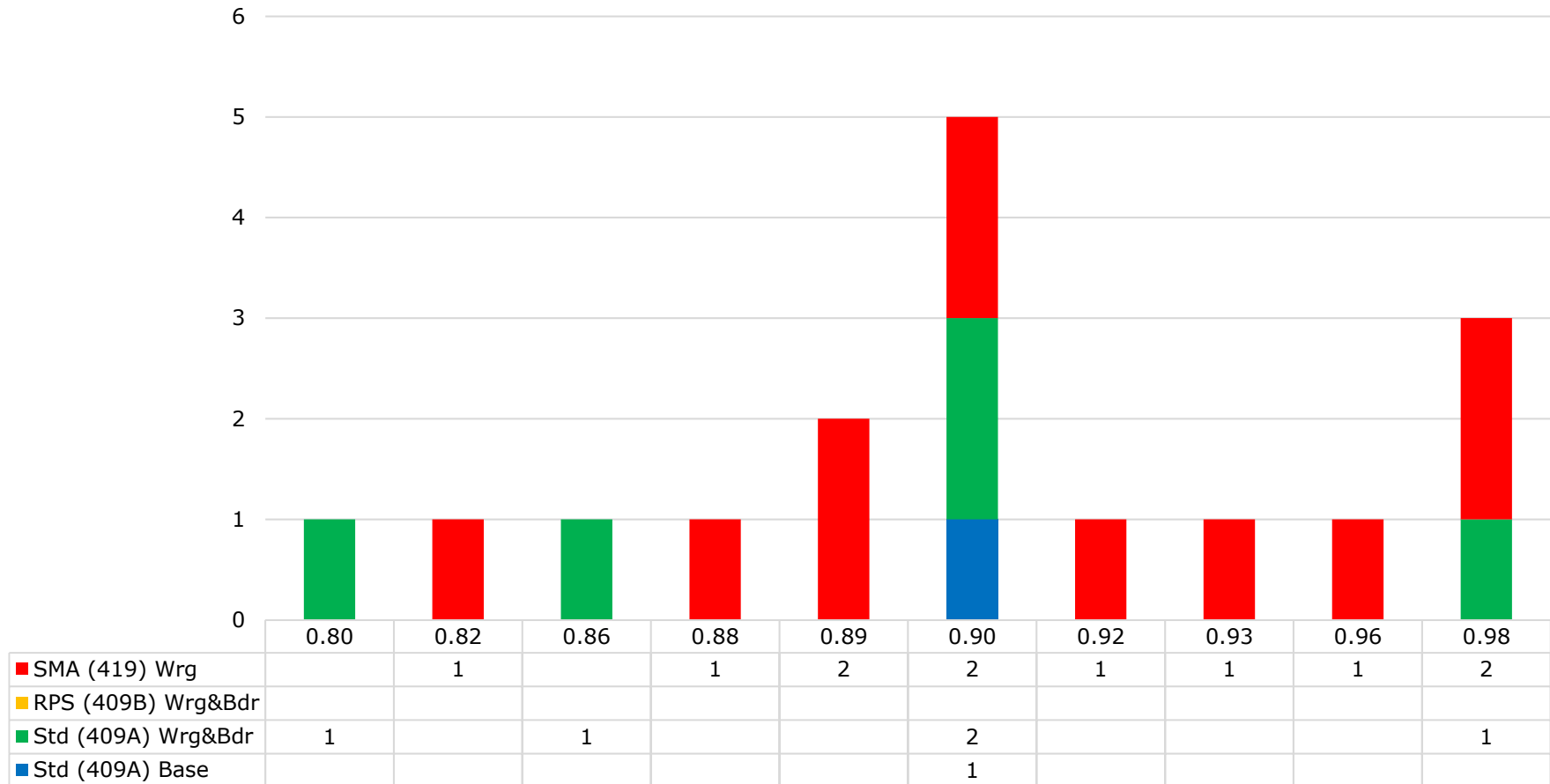
■ Full Payment ■ Reduced Payment ■ Remove & Replace/50% Pay



Full Payment	90.3%
Reduced Payment	7.6%
Defective – R&R/50%	2.1%

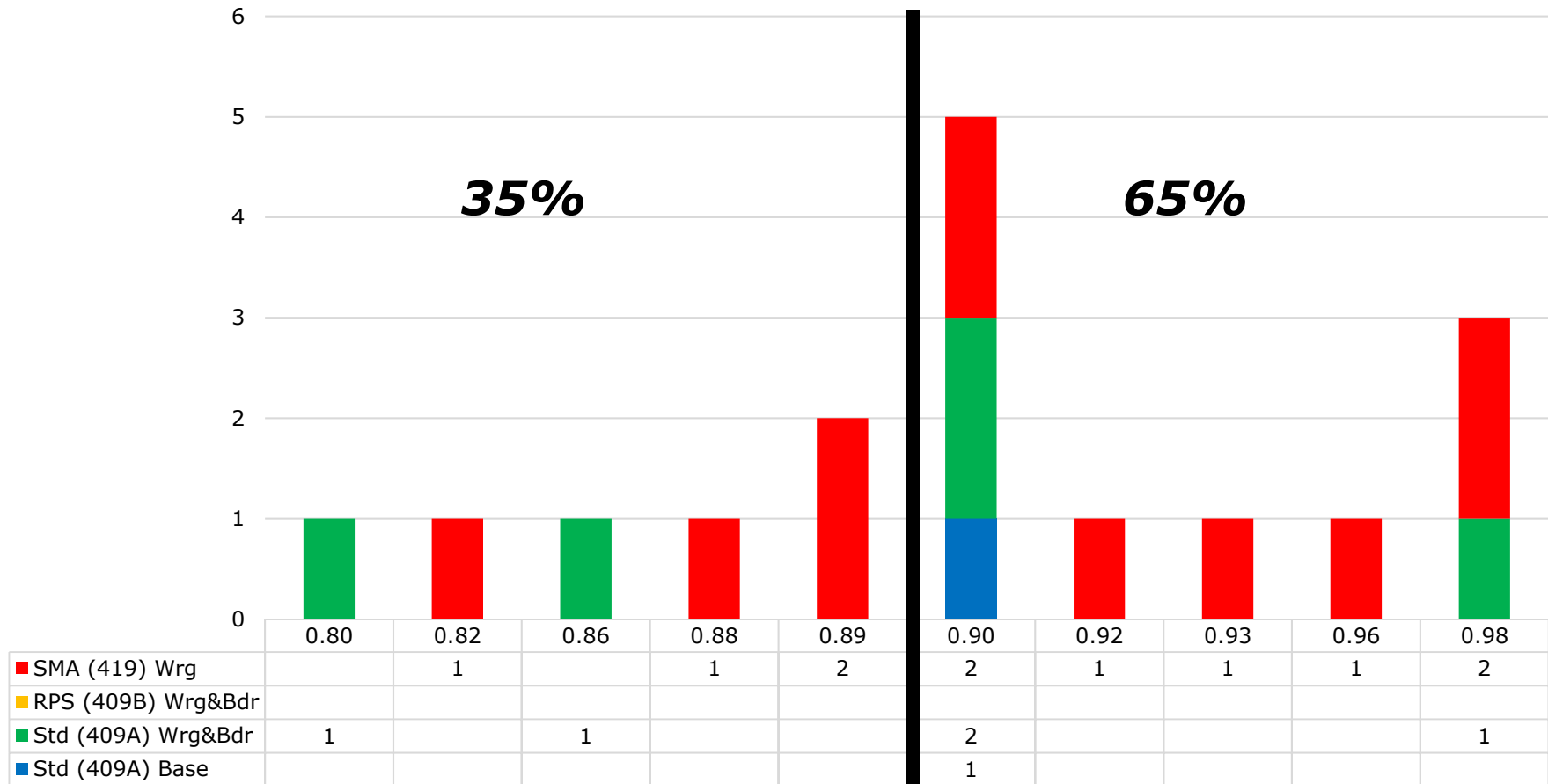
Lots	Total	AC	No.200	Density
Reduced Payment	11	0	0	11
R&R / 50%	3	2	1	0

# Lot Penalty Payment Distribution RPS, Standard, and SMA

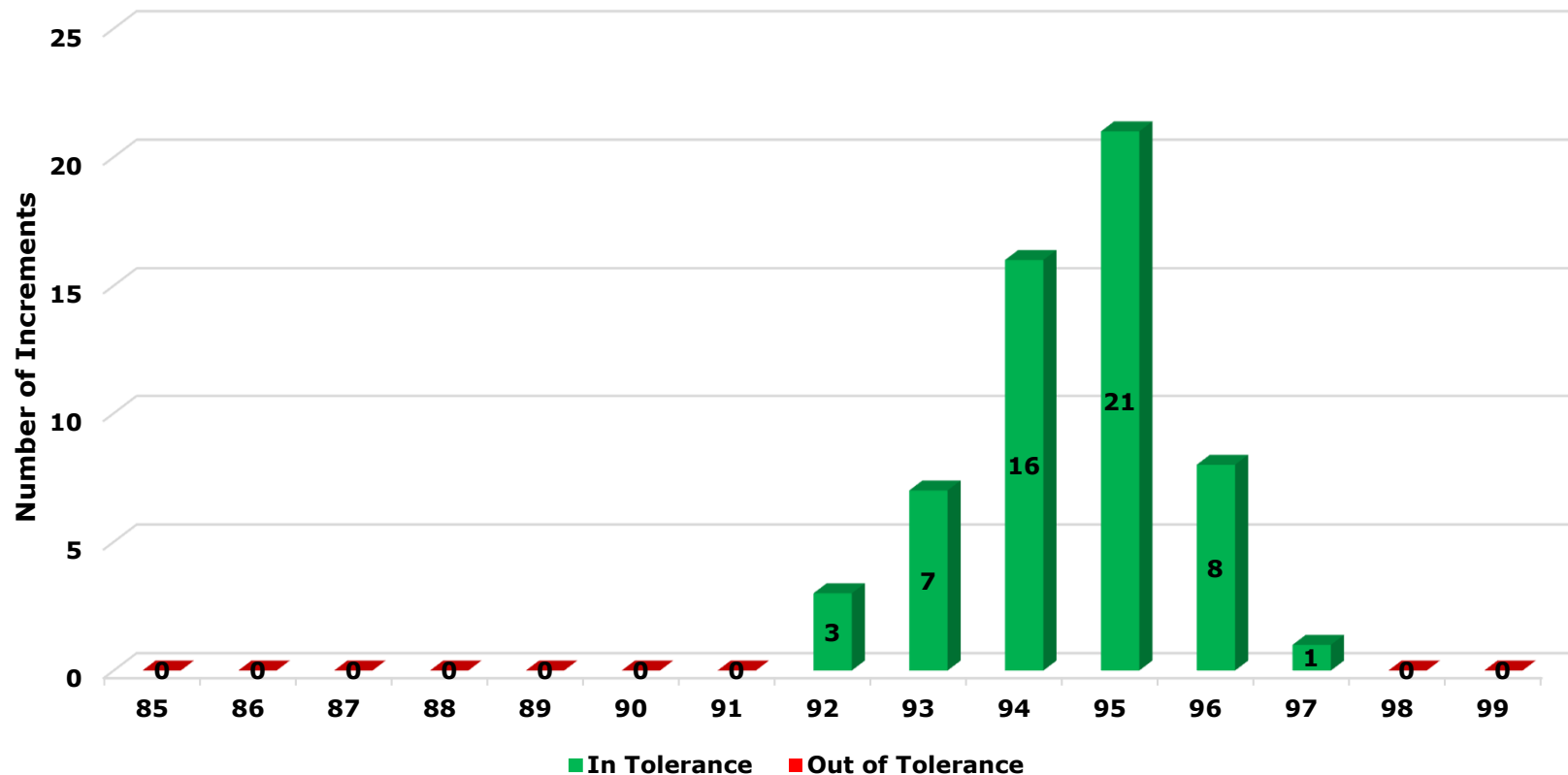




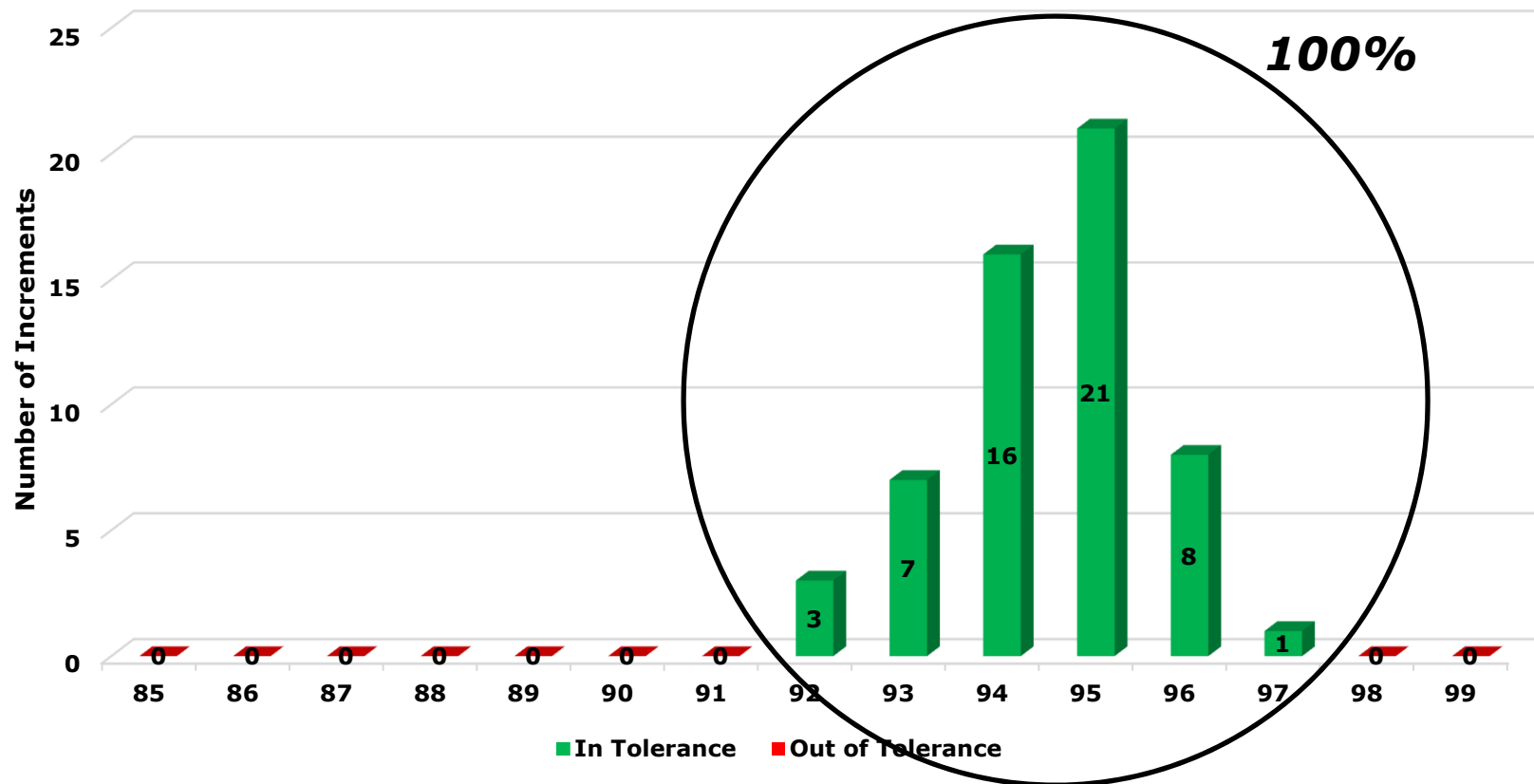
# Lot Penalty Payment Distribution RPS, Standard, and SMA



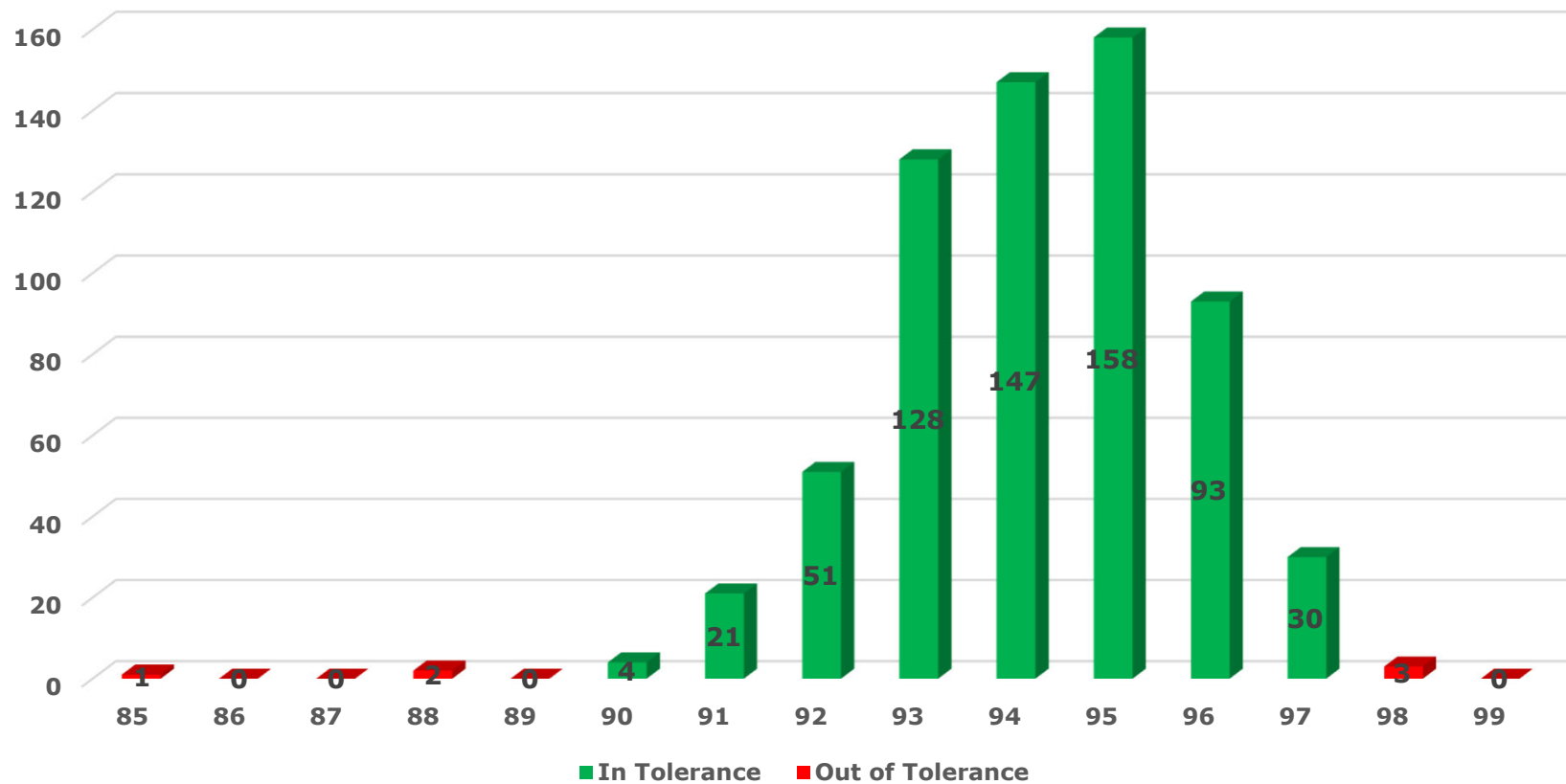
# 2018 Statewide Density Distribution RPS Wearing and Binder – Individual Increments



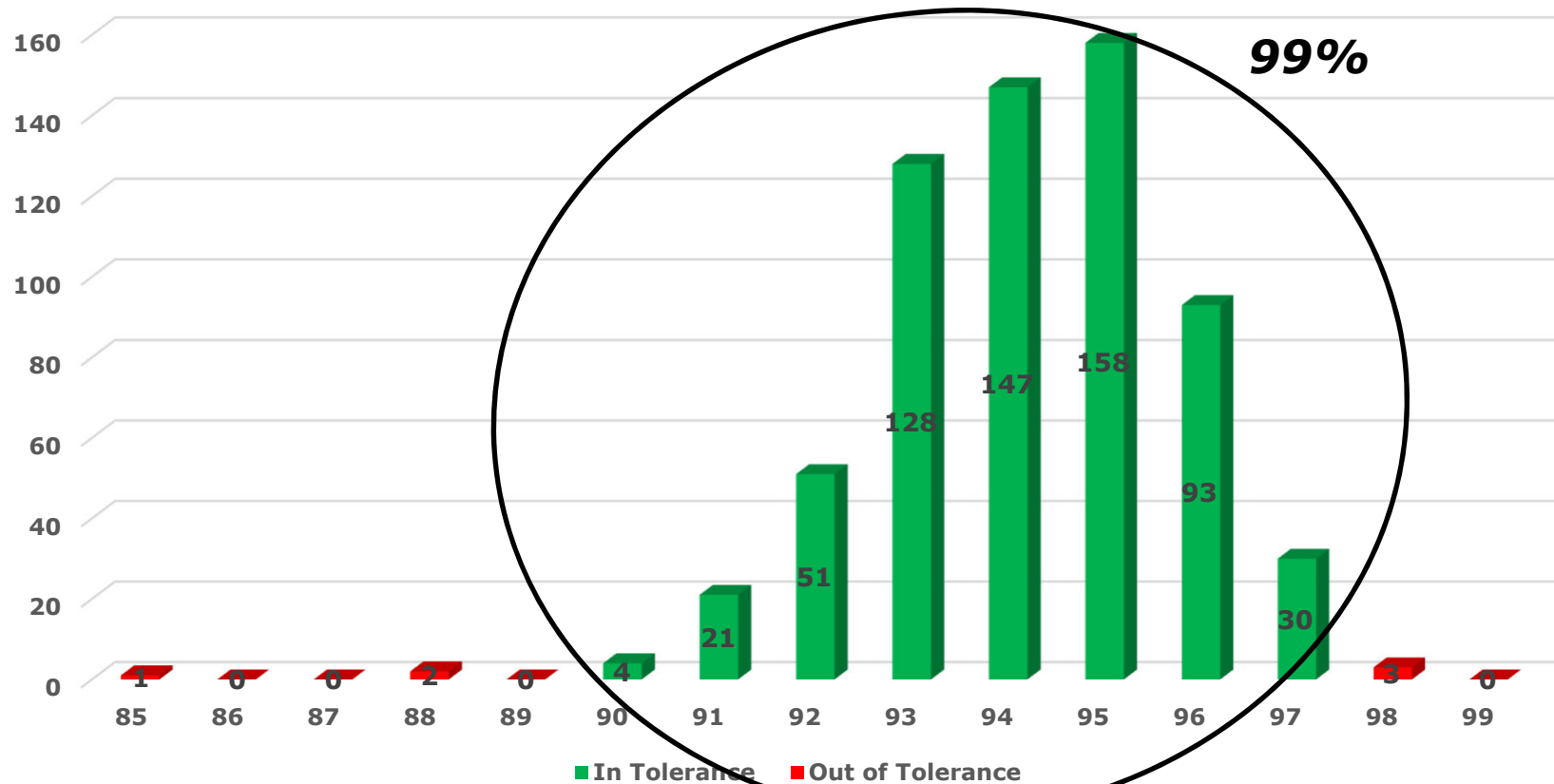
# 2018 Statewide Density Distribution RPS Wearing and Binder – Individual Increments



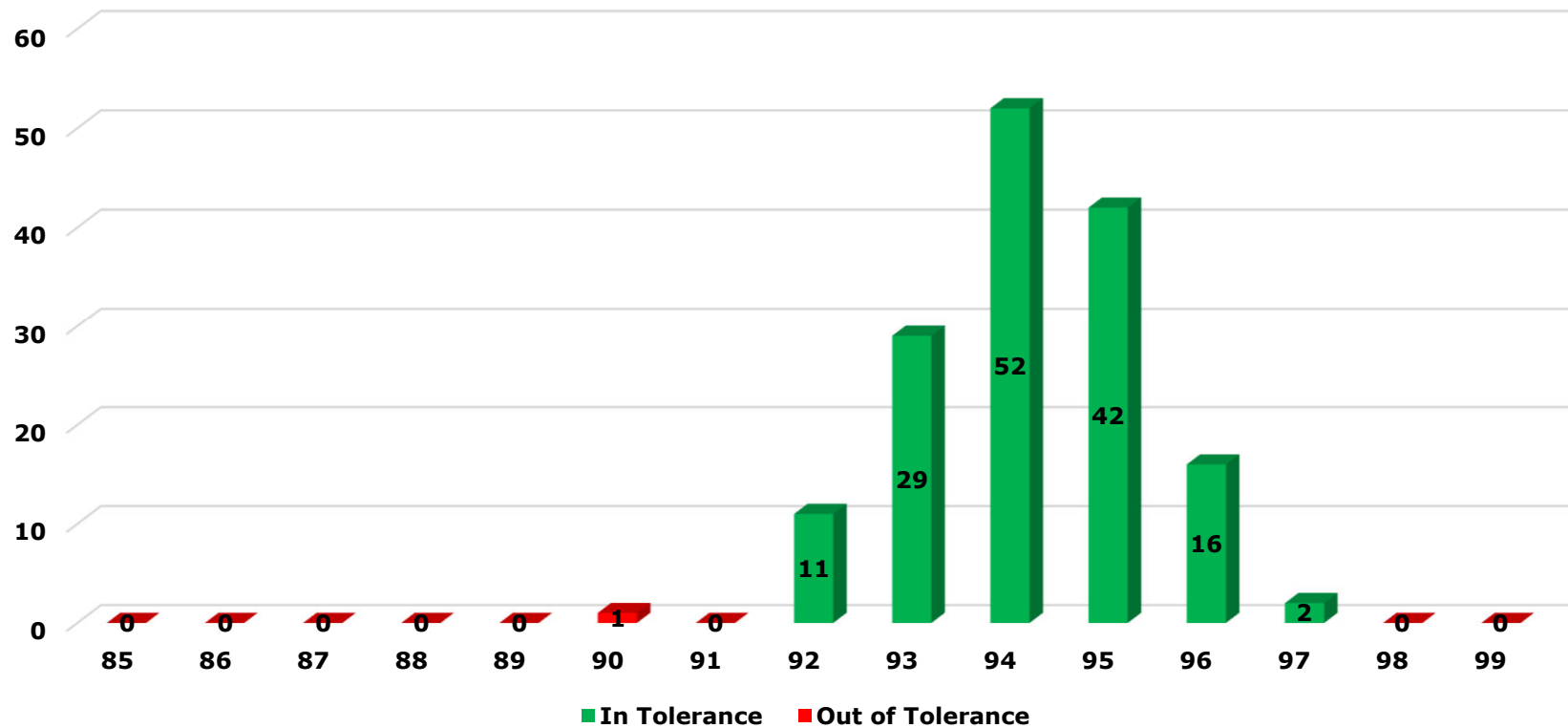
# 2018 Statewide Density Distribution Standard Wearing and Binder – Ind. Increments



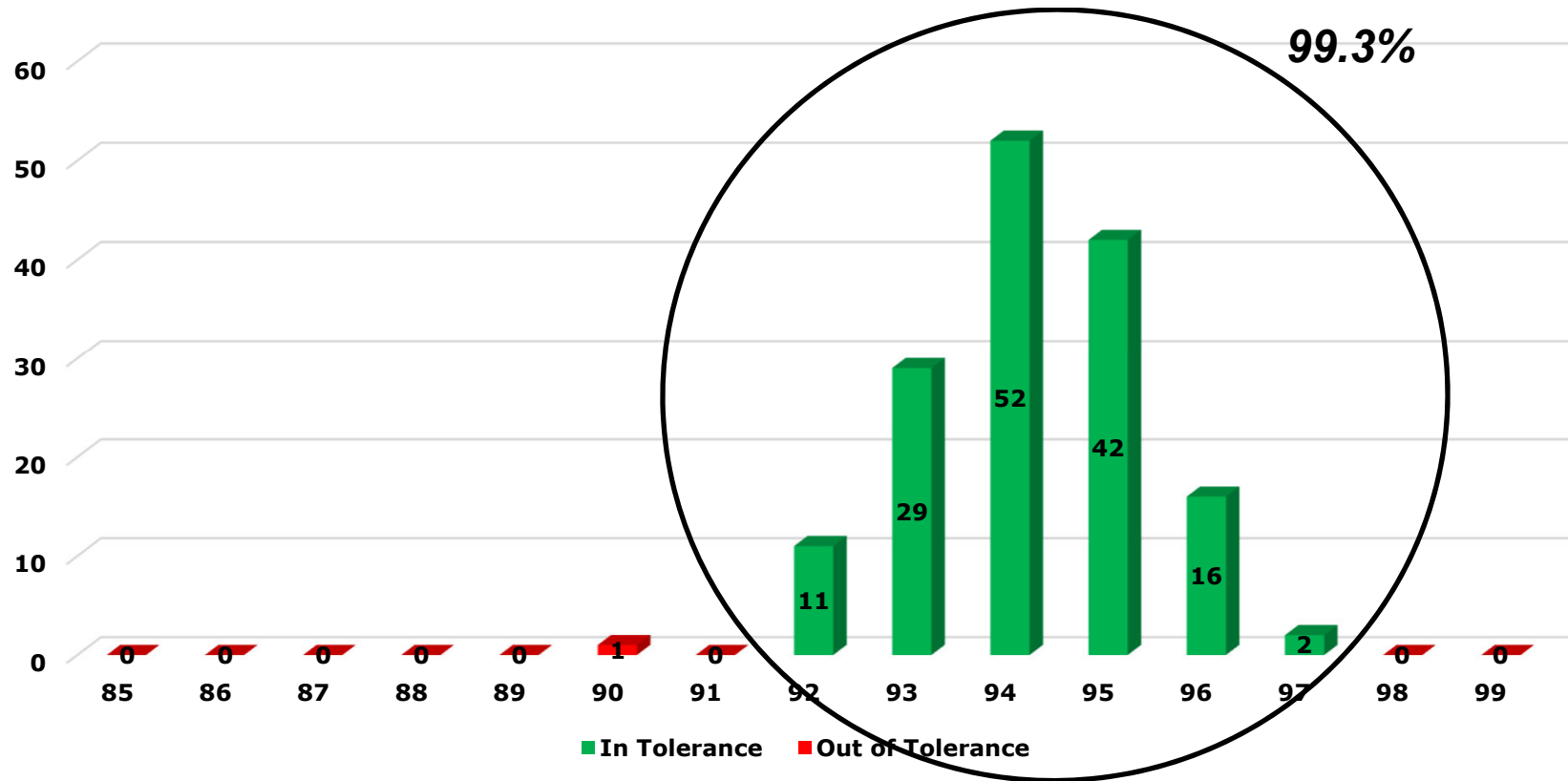
# 2018 Statewide Density Distribution Standard Wearing and Binder – Ind. Increments



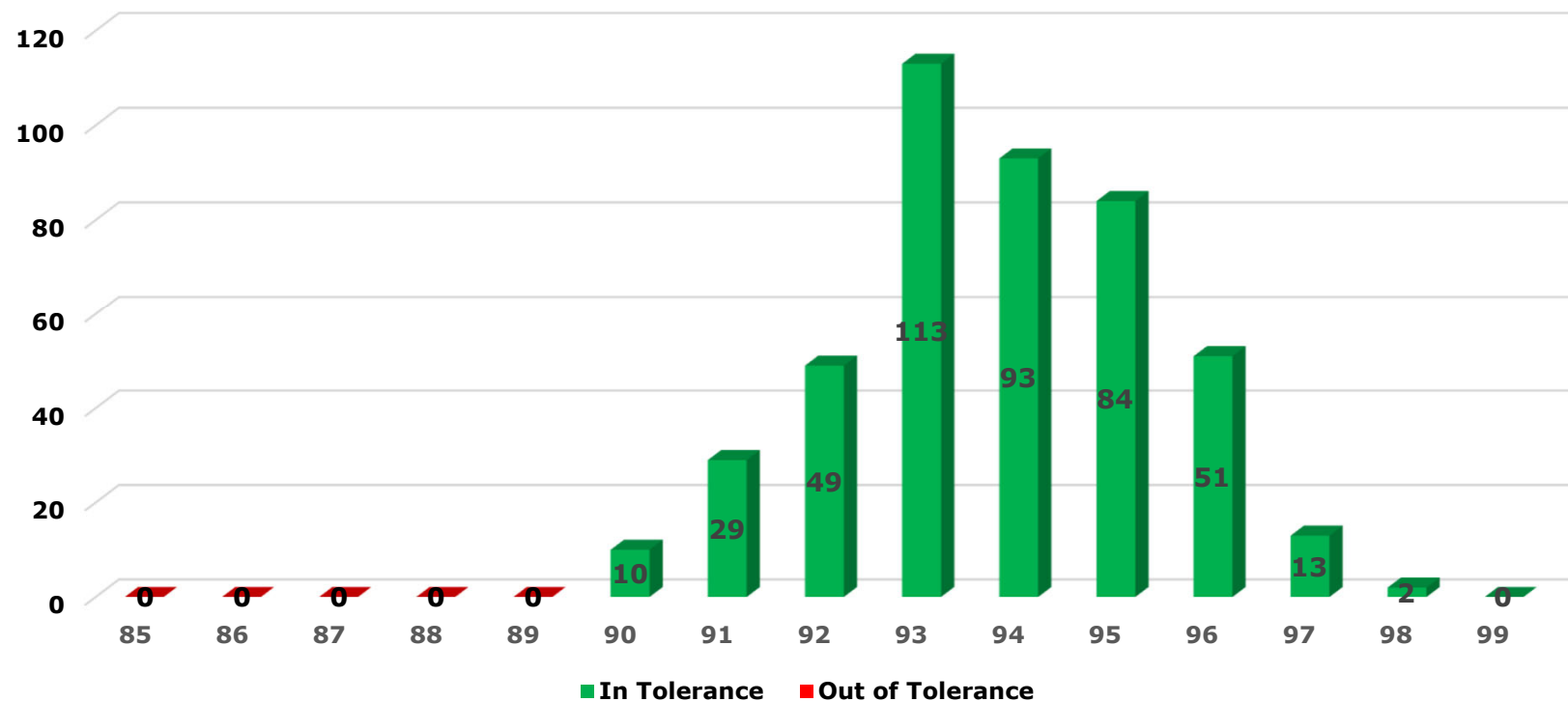
# 2018 Statewide Density Distribution Standard Wearing and Binder – Lot Averages



# 2018 Statewide Density Distribution Standard Wearing and Binder – Lot Averages

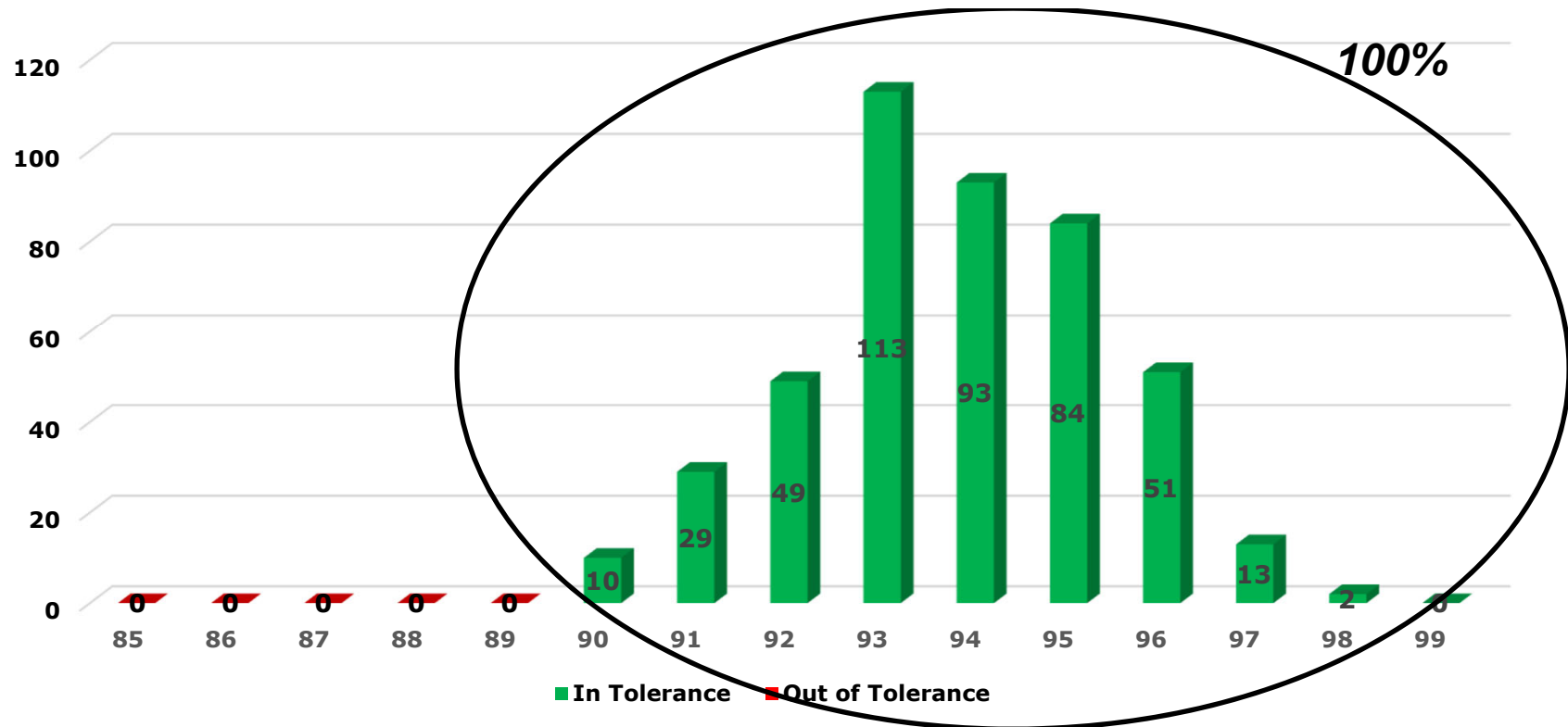


# 2018 Statewide Density Distribution Standard Base Course – Individual Increments

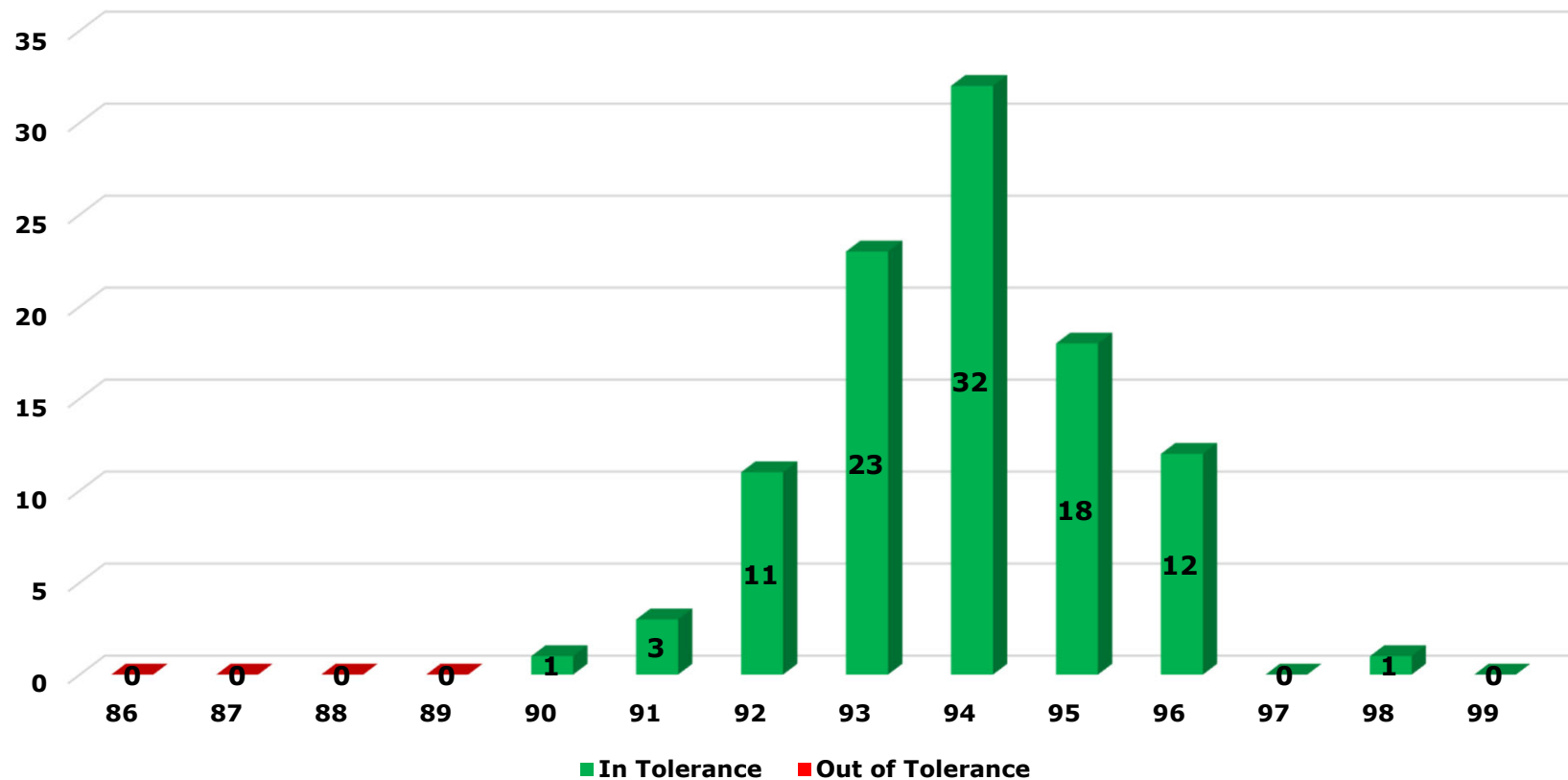




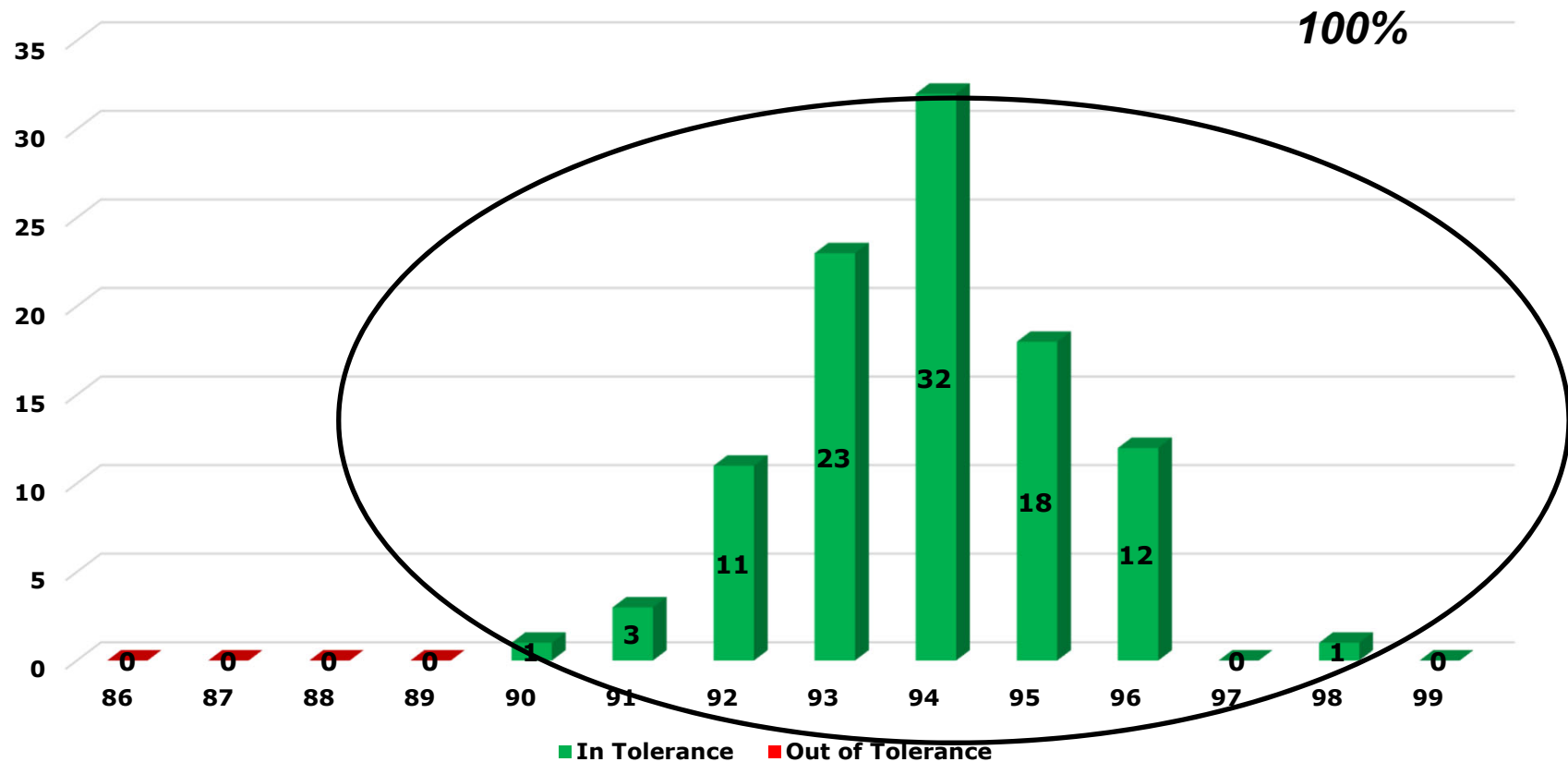
# 2018 Statewide Density Distribution Standard Base Course – Individual Increments



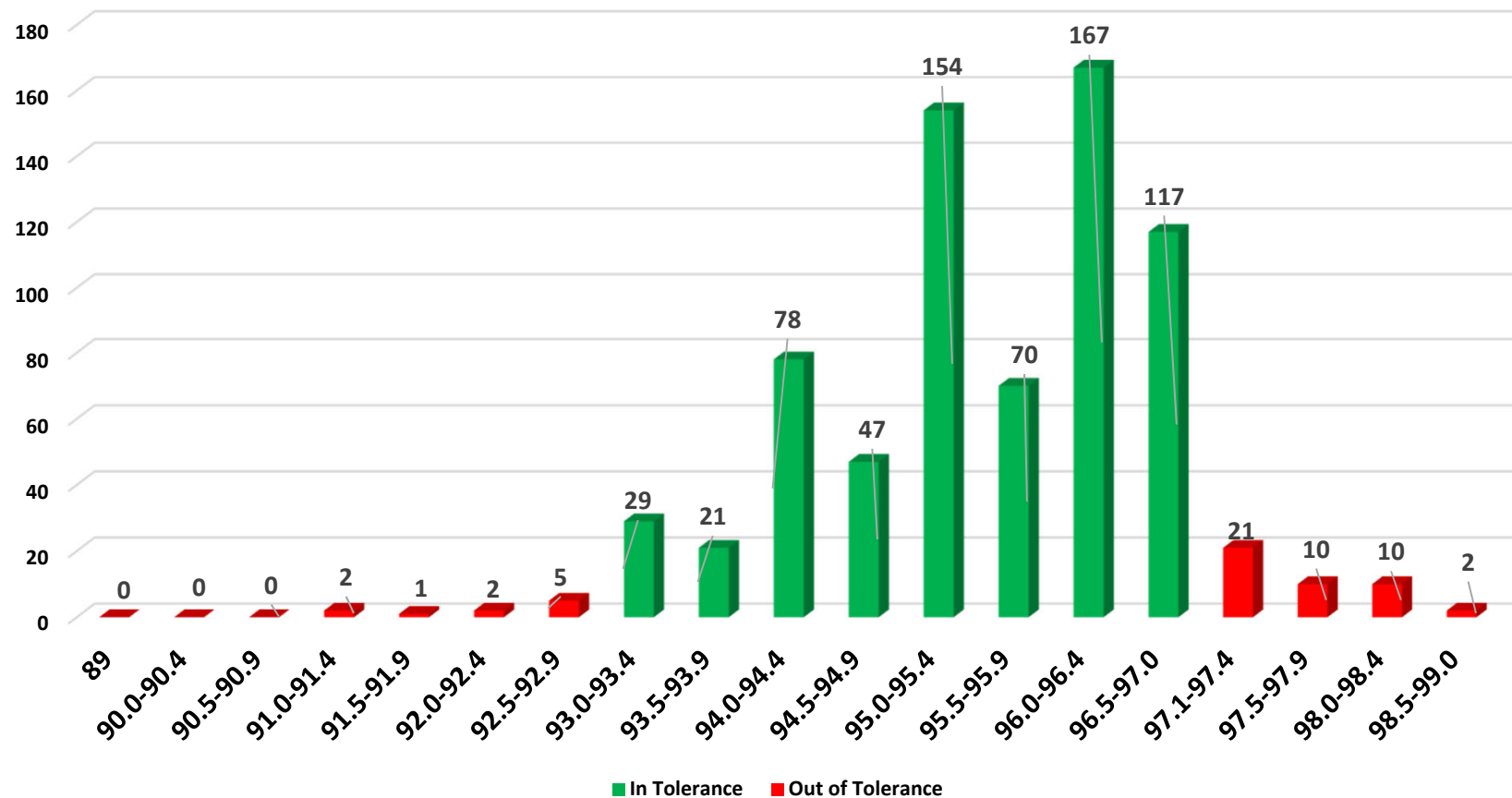
# 2018 Statewide Density Distribution Standard Base Courses – Lot Averages



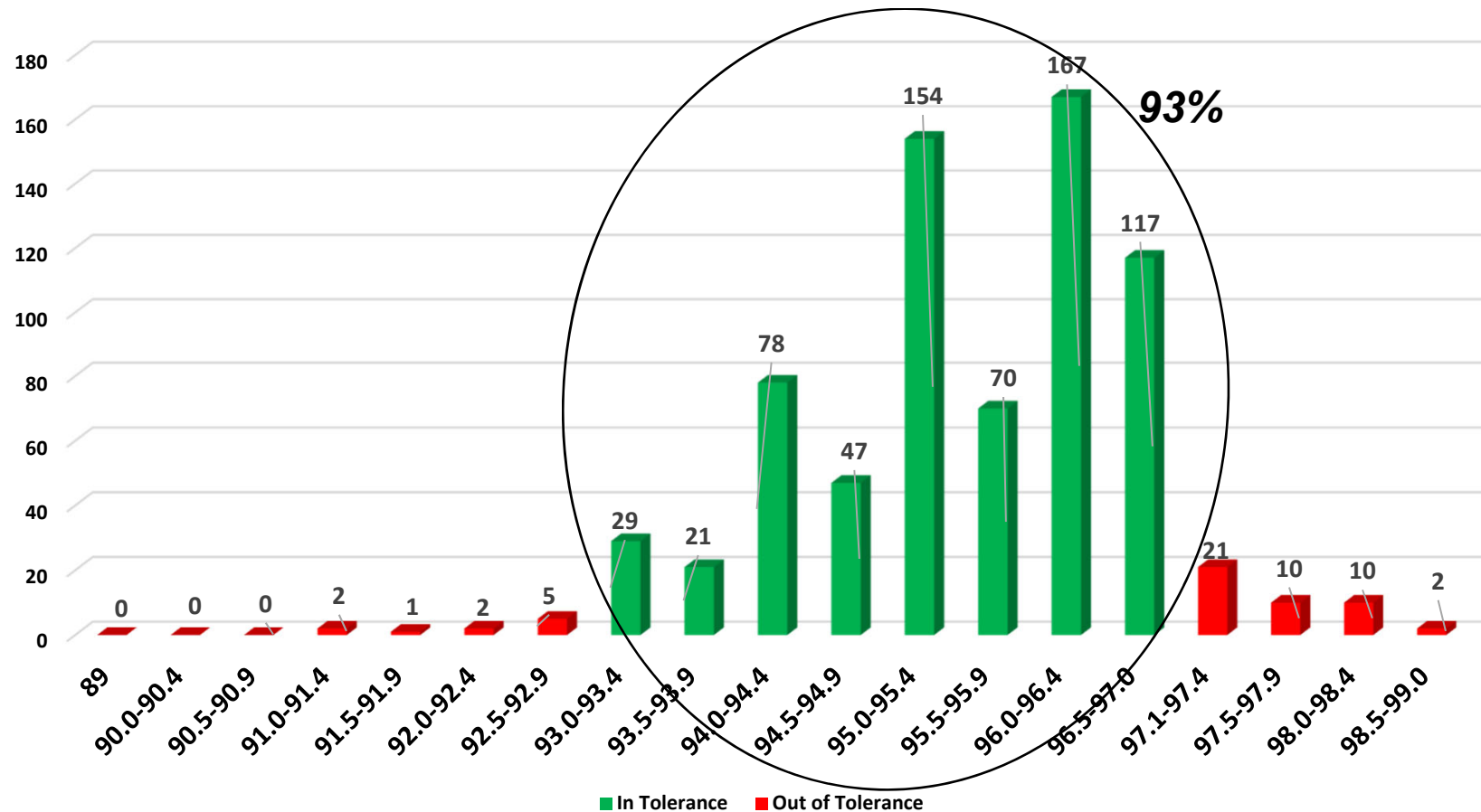
# 2018 Statewide Density Distribution Standard Base Courses – Lot Averages



# 2018 Statewide Density Distribution SMA – Individual Increments



# 2018 Statewide Density Distribution SMA – Individual Increments



# eCAMMS UPDATES

**eCAMMS**

Home Sample JMF ESB Product Evaluation Maintenance **Tools** TR-447 Ref #: Sample #: Search

**Current System Status** - There are currently no known issues.

Logout  
My Profile  
**About**

Please note, Google Chrome is the recommended browser for eCAMMS and your first transaction of the day takes longer than subsequent transactions due to the system refreshing and loading cache. If you are making administrative changes to eCAMMS, it is also important to note that to accommodate the performance enhancements deployed with Release 14.2, system cache times have increased from every 20 minutes to once per hour.

eCAMMS Release 17 was successfully deployed on Monday, October 29. For full information on this release please see **What's New** (Tools - About).

When setting up a sample to which a Special Provision applies, check the Special Provisions checkbox and then begin typing any part of the Special Provision name in the dropdown box:

# eCAMMS UPDATES

- Administrative Functions
  - JMF Revision Restrictions
  - JMF Validation Requirements – New Column Name Options
  - JMF Ingredient Validation Requirements
- TR-447 changes
  - Sampled by and Inspected by e-mail validation
- ESB Changes
  - Added PO Number to results on Find Plnt Summ Shipment
- Sample Changes
  - Post-Finalization Comment required

# eCAMMS UPDATES

- Advanced Search – New Filter “Sample ID”
- Added Contractor Code and Supplier Code to Client Report Search Results
- Added Material Code/Class, Supplier Code, ECMS#, SR#, and Section to Client Report e-mail Notifications
- Re-calculate Pop-up Message for 408 Spec Change
- Section 419 Revisions



# QUESTIONS?

**Jay Sengoz**

717-346-1548

csengoz@pa.gov